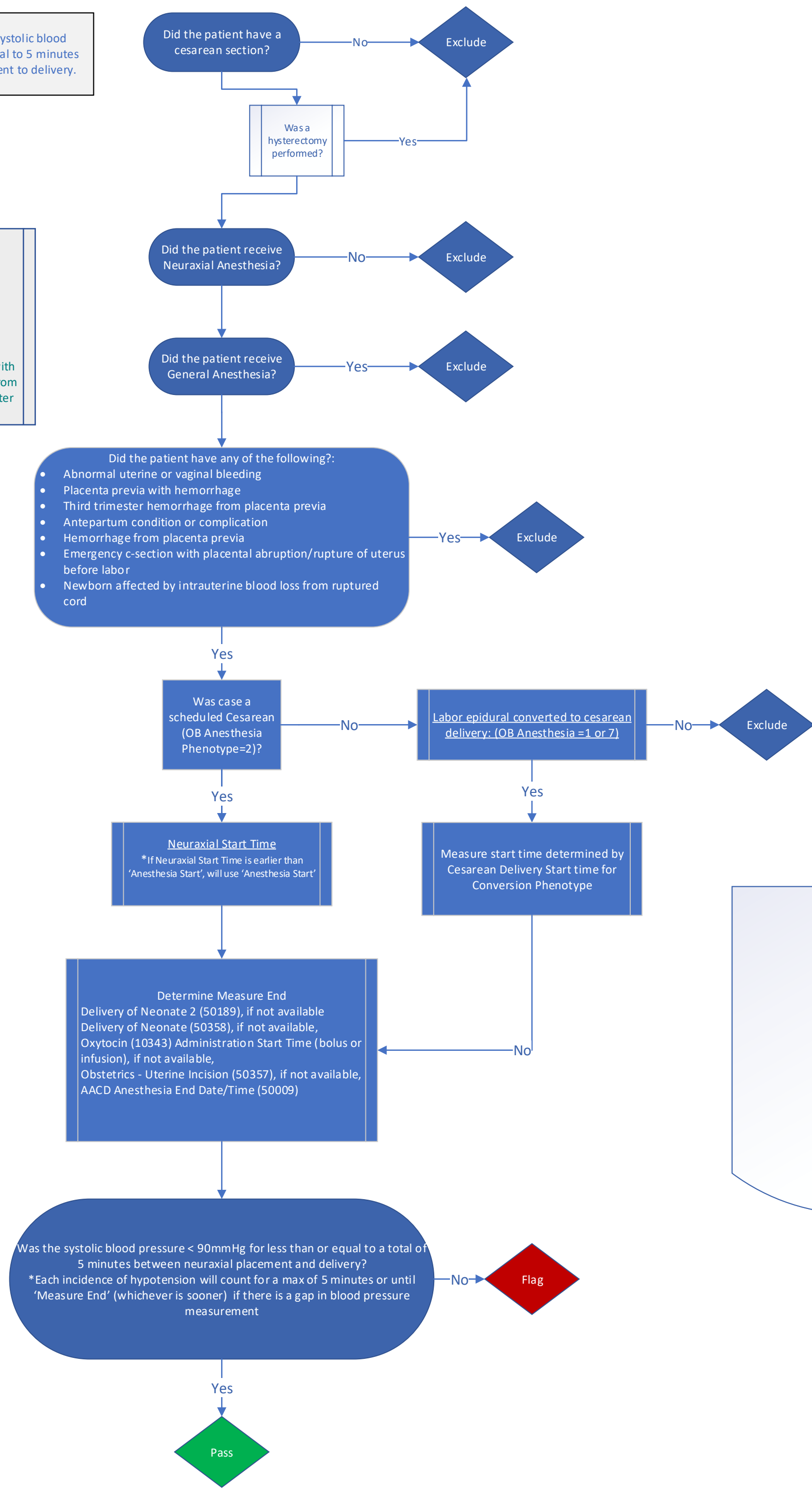


BP-04-OB- Percentage of cases with systolic blood pressure <90mmHg for less than or equal to 5 minutes during the time from neuraxial placement to delivery.

ICD-10 Exclusion codes:
ICD-10: 045
ICD-10: 071.0
ICD-10: P50.1
ICD-10: N93.9
ICD-10: O44.13
ICD-10: 641.13
ICD-10: 641.11
*ICD-10 codes associated with the case and documented from 7 days before to 30 days after the case are considered.



Cesarean Delivery procedure is determined by the **'Obstetric Anesthesia Type' phenotype**

Use of general anesthesia is determined by the **'Anesthesia Technique: General' phenotype**

Cesarean Delivery Start Time for Conversions.

Neuraxial Phenotype

Neuraxial Start Time