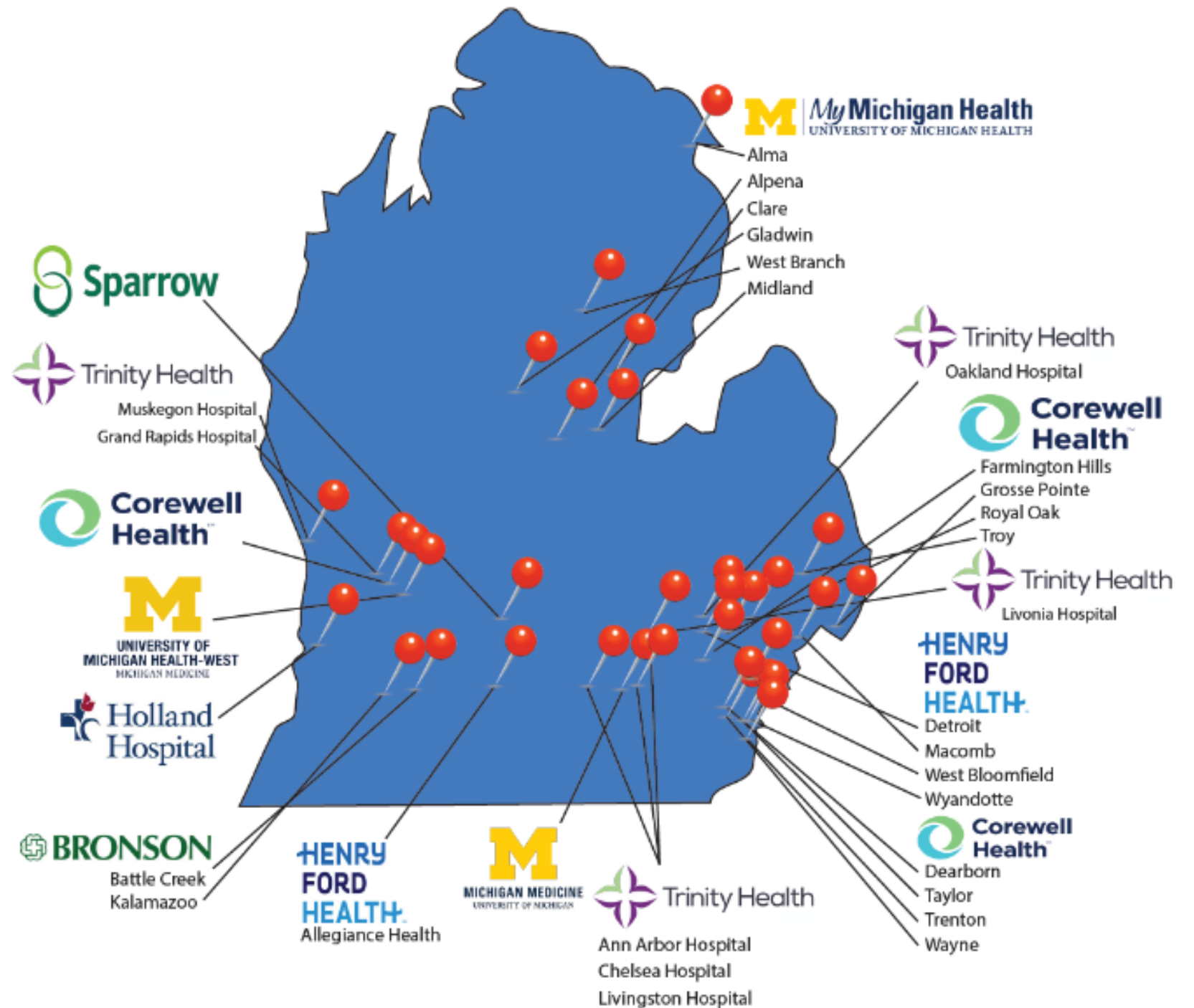




Nonprofit corporations and independent licensees
of the Blue Cross and Blue Shield Association

Thank You

2023 Michigan Sites
Same as 2022 Sites



Our Team



Henrietta Addo, MSN-NI, RN
QI COORDINATOR



Nicole Barrios, MHA, RN
QI COORDINATOR



Kathryn Buehler, MS, RN
CLINICAL PROGRAM MANAGER



Michael Burns, MD, PhD
FACULTY



Diana O'Dell, MPH
RESEARCH FACILITATOR



Rebecca Pantis
RESEARCH ASSISTANT



Ronnie Riggart
ADMINISTRATIVE SPECIALIST



Michelle Romanowski
DEVELOPER



David Clark
PROJECT MANAGER



Robert Coleman
PROGRAMMER



Douglas Colquhoun, MB ChB, MSc, MPH
ASSOCIATE RESEARCH DIRECTOR



Mark Dehring
TECHNICAL TEAM MANAGER



Sandy B. Rozek, MA
RESEARCH FACILITATOR



Robert Schonberger, MD
ASSOCIATE RESEARCH DIRECTOR



Nirav Shah, MD
QUALITY IMPROVEMENT DIRECTOR



Anik Sinha
DEVELOPER



Anthony Edelman, MD, MBA, FASA
ASSOCIATE QUALITY IMPROVEMENT DIRECTOR



Chris Heiden
TECHNICAL SUPPORT LEAD



Allison Janda, MD
RESEARCH FACULTY, CARDIAC QI SUBCOMMITTEE LEAD



Jay Jeong, MSI
DEVELOPER



Frances Guida Smiatacz
ADMINISTRATIVE ASSISTANT



Shushma Vallamkonda
DEVELOPER



John Vandervest, MS
DATA SCIENTIST



Shelley Vaughn, MPH
LEAD RESEARCH FACILITATOR



Sachin Kheterpal, MD, MBA
EXECUTIVE DIRECTOR



Tory Lacca, MBA
ADMINISTRATIVE PROGRAM MANAGER



Tiffany Malenfant, MSN, RN-BC
CLINICAL INFORMATICS SPECIALIST



Mike Mathis, MD
RESEARCH DIRECTOR



Meredith Wade, MSN, RN
PEDIATRIC PROGRAM MANAGER

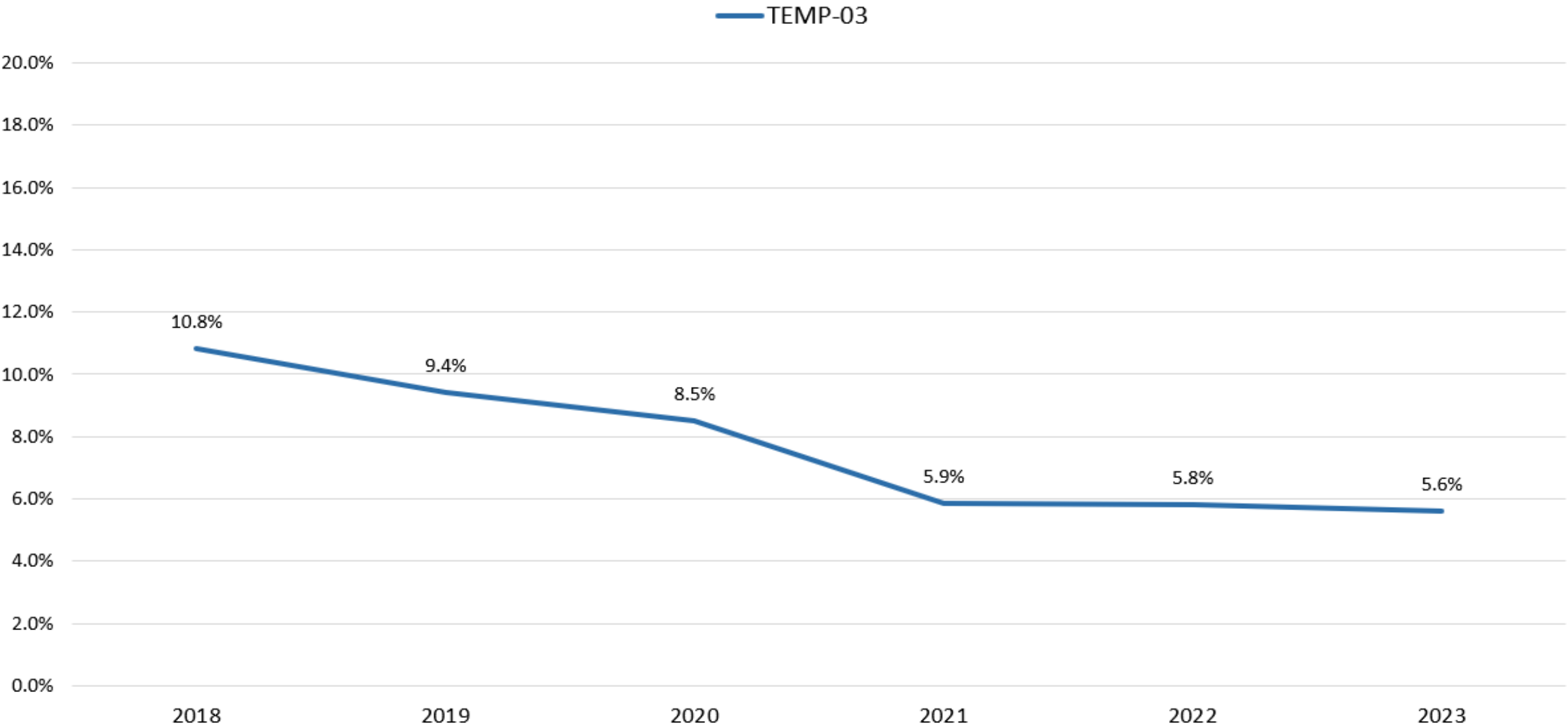


Andrew Zittleman, MSN, RN
CLINICAL INFORMATICS SPECIALIST



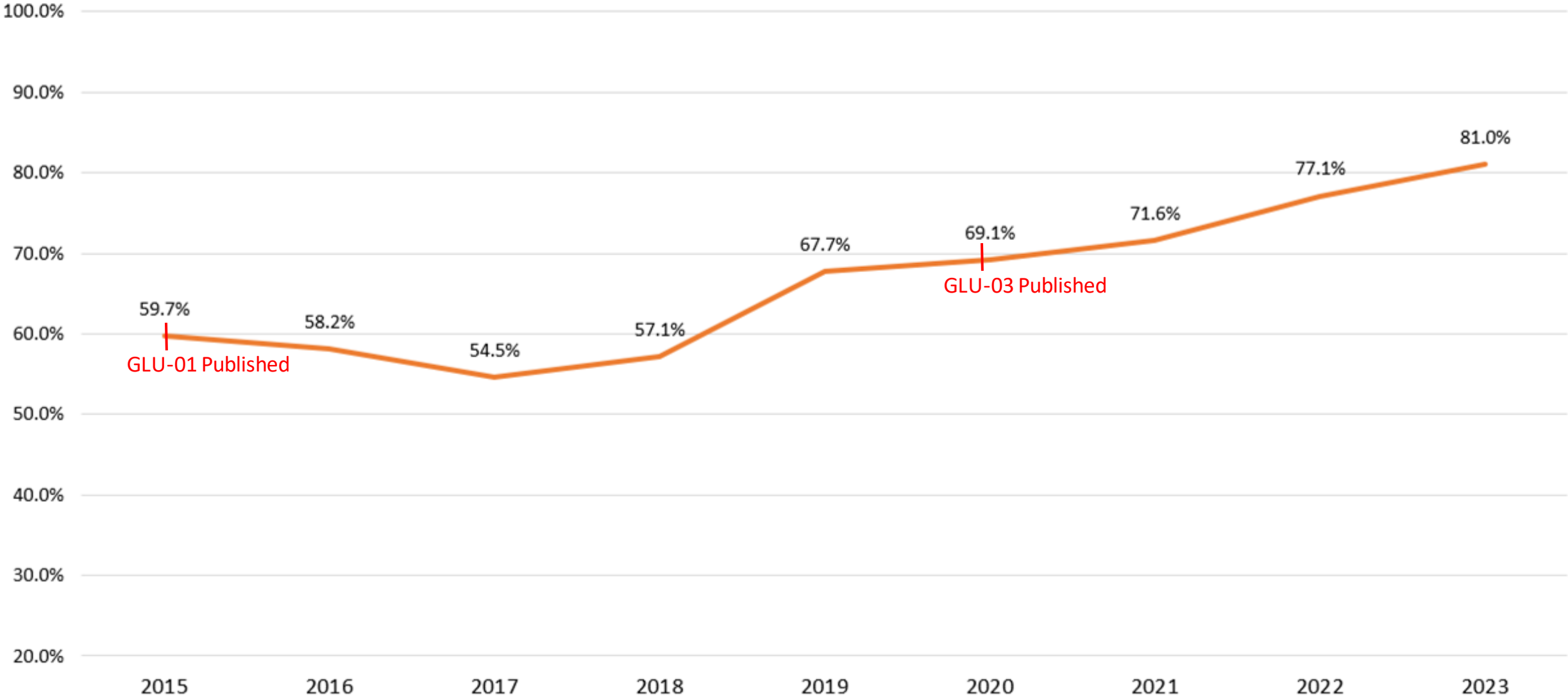
Progress

Percentage of patient with temperature below 36.0 C at the end of the case



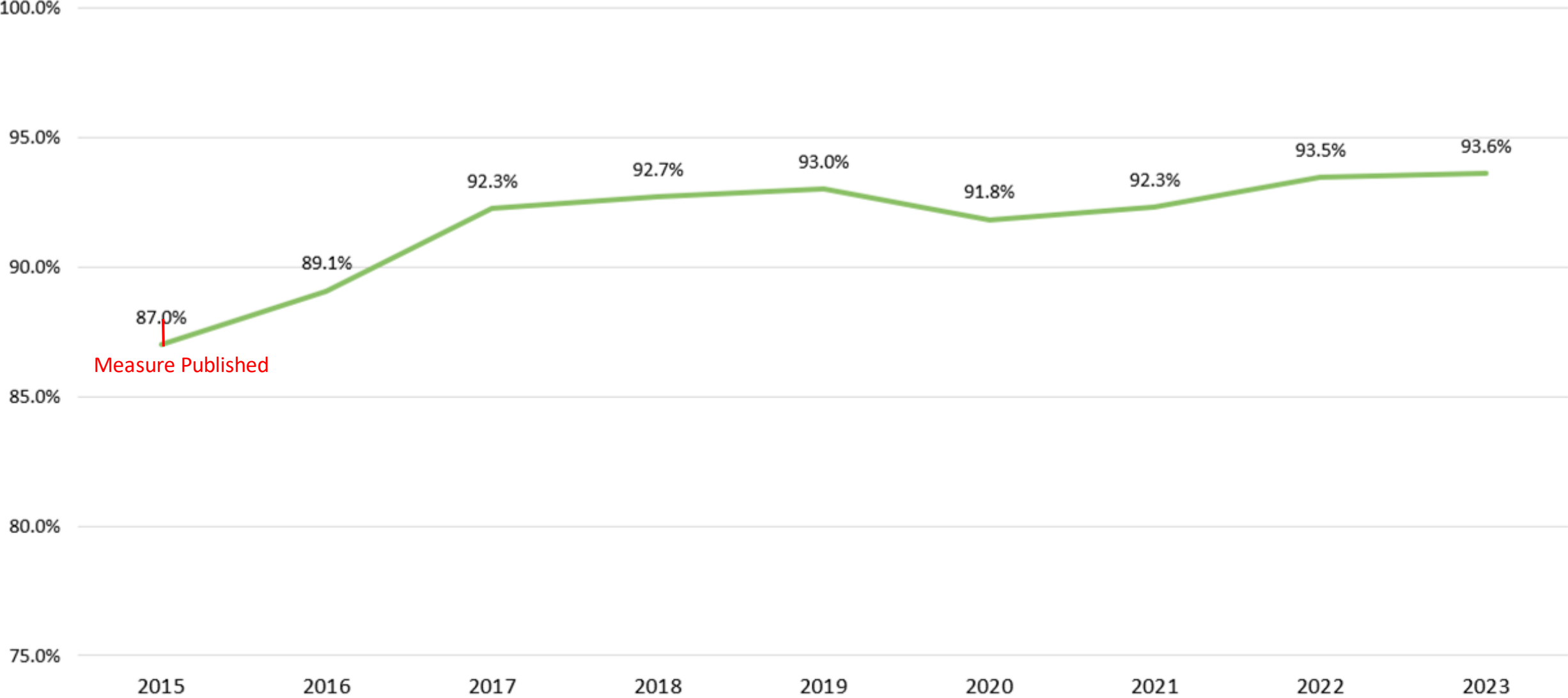
Percentage of patients with glucose > 200 mg/dL treated or rechecked within 90 minutes

GLU-03: High Glucose Treated, Periop



Appropriate reversal of neuromuscular blockade

NMB-02: Reversal Adminisered



Global warming footprint of cases during maintenance period of anesthesia

SUS-02 Total CO2 Equivalents per Minute



Virtuous
Cycle



Improved Feedback



PI - Zach Landis Lewis PhD

Does adding a *precisionized* message in the provider feedback email improve measure performance?

~Year 1 - Interviewing providers about their preferences for feedback and building a “pipeline” from/to ASPIRE provider feedback emails

~Year 2 and 3 - Conducting a trial with control (existing emails) and intervention (updated) emails

~Year 4 - disseminating results

Precision Feedback Trial

- Pilot trial completed –
 - November 2023 through January 2024
 - 2 MPOG sites
- National trial (including MI sites) coming soon –
 - May through October 2024
 - Opt out participation for all MPOG sites receiving feedback emails



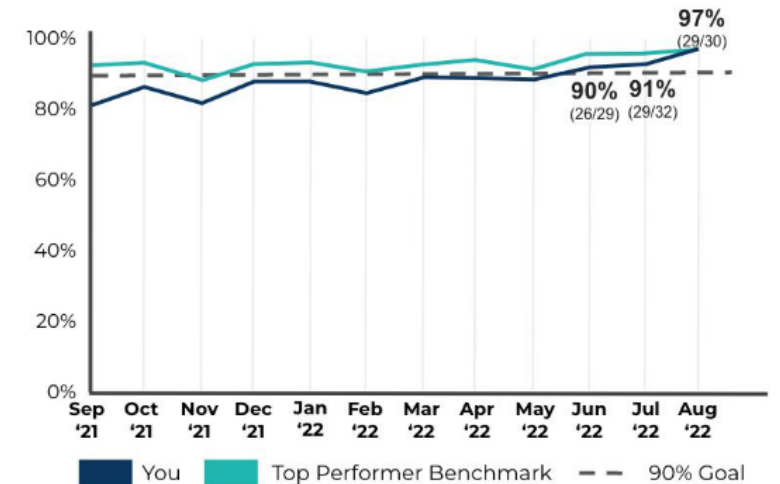
Claim MOCA® Credit

Dear Alex,

You reached the top performer benchmark this month for the measure [PUL-01: Protective Tidal volume, 10mL/Kg PBW.](#)

More information about the rationale for the measure PUL-01 and how it is calculated [is available here in a brief infographic \(no login required\).](#)

Below is your complete MPOG quality performance report...



CONTRACTION-CS

COMparing iNoTRope prACTice variaTION in Cardiac Surgery



PI – Mike Mathis

CONTRACTION-CS

The Problem

Cardiac inotropes have tradeoffs impacting complications after cardiac surgery, yet current evidence fails to capture the nuanced clinical contexts in which they are harmful versus helpful.

The Big Questions


- What factors currently drive inotrope decision-making?
- What are barriers and facilitators to inotrope practice change?
- Can we use integrated health data to better estimate context-specific causal effects of inotropes on outcomes?

CONTRACTION-CS



Cardiac
Surgery
Patient

Aim 1
Identify Phenotypes Associated with Inotrope Use




MPOG Database

- >40 US academic and community hospitals
- Granular inotrope choice / timing data & validated covariates

STS Database

- 100% US hospital capture, enabling MPOG sample weighting to reflect US practice

Aim 2
Characterize and Quantify Local Barriers to Inotrope Use



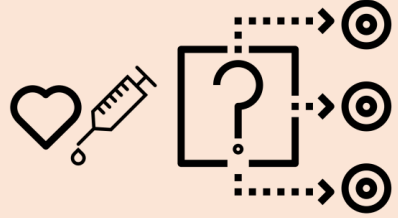
Interview Data

- 30 clinicians across 6 institutions
- Characterization of themes driving inotrope use

Survey Data

- 1,000-1,500 clinicians across 12 institutions
- Quantify local barriers/facilitators to inotrope use

Aim 3
Estimate Context-Specific Causal Effects of Inotropes



Complication

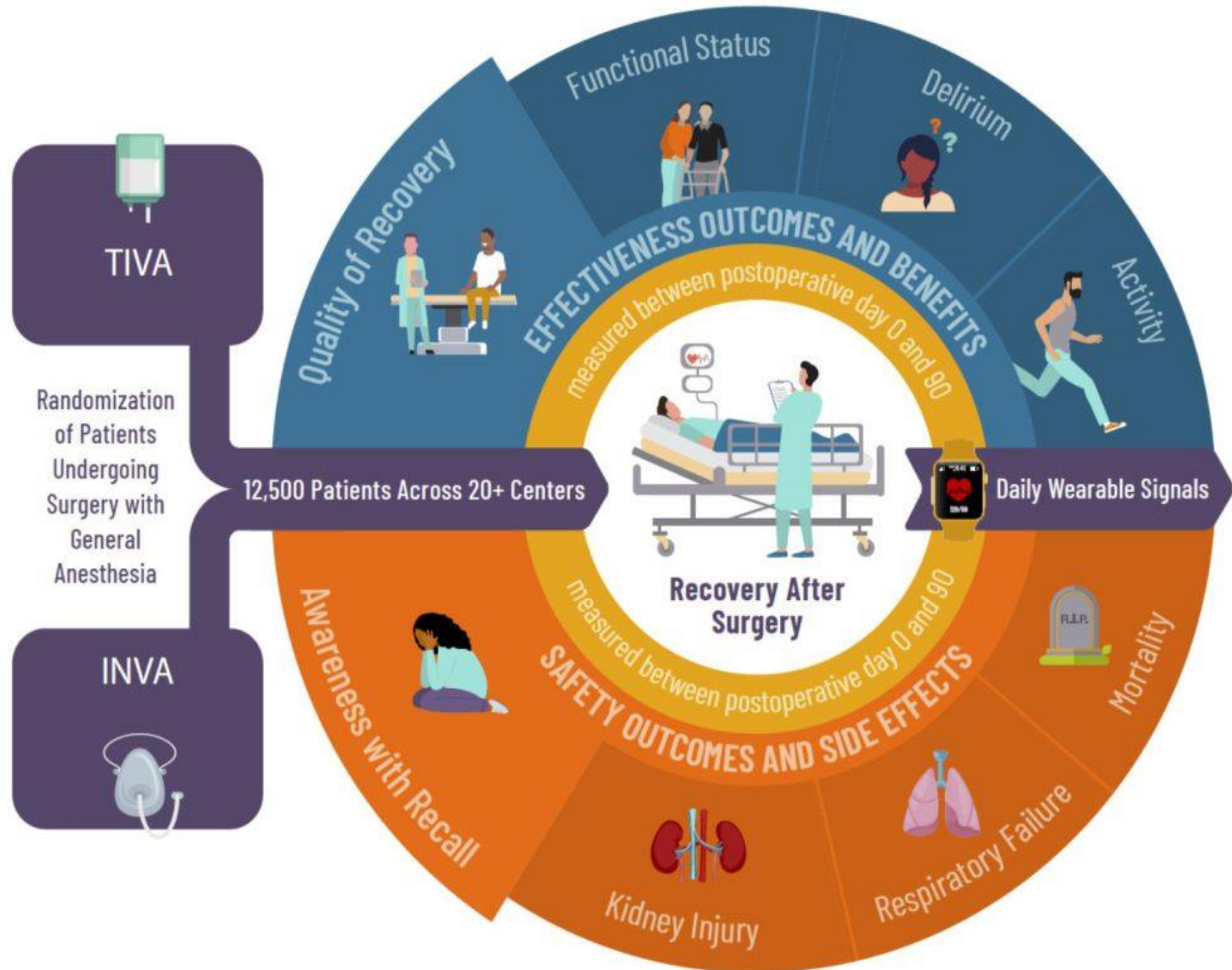
Recovery

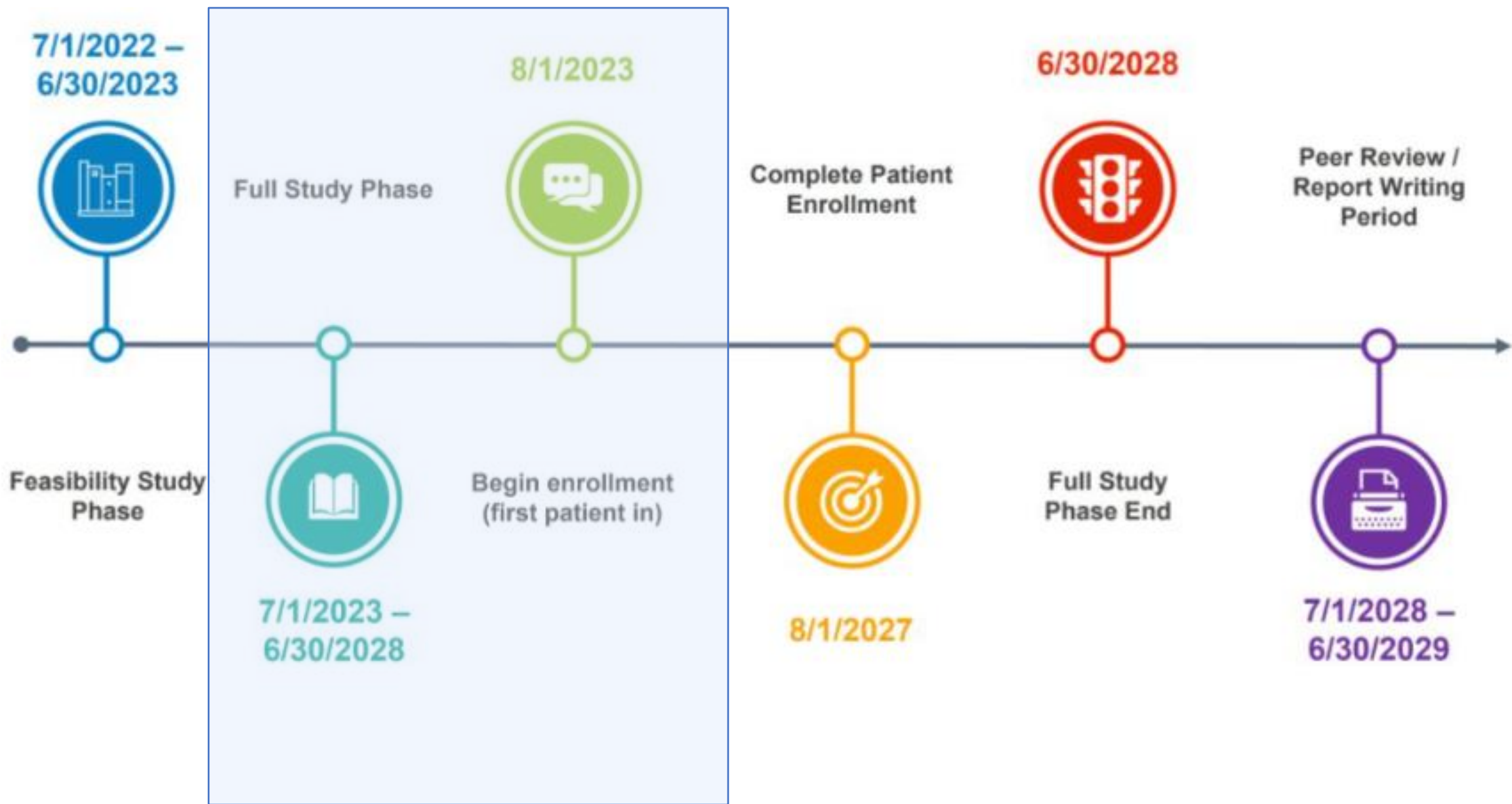
Integrated MPOG-STS Database

- >25,000 data points per patient
- Precise characterizations of inotrope use, patient-centered outcomes, and confounders



PI – Sachin Kheterpal







Thank you