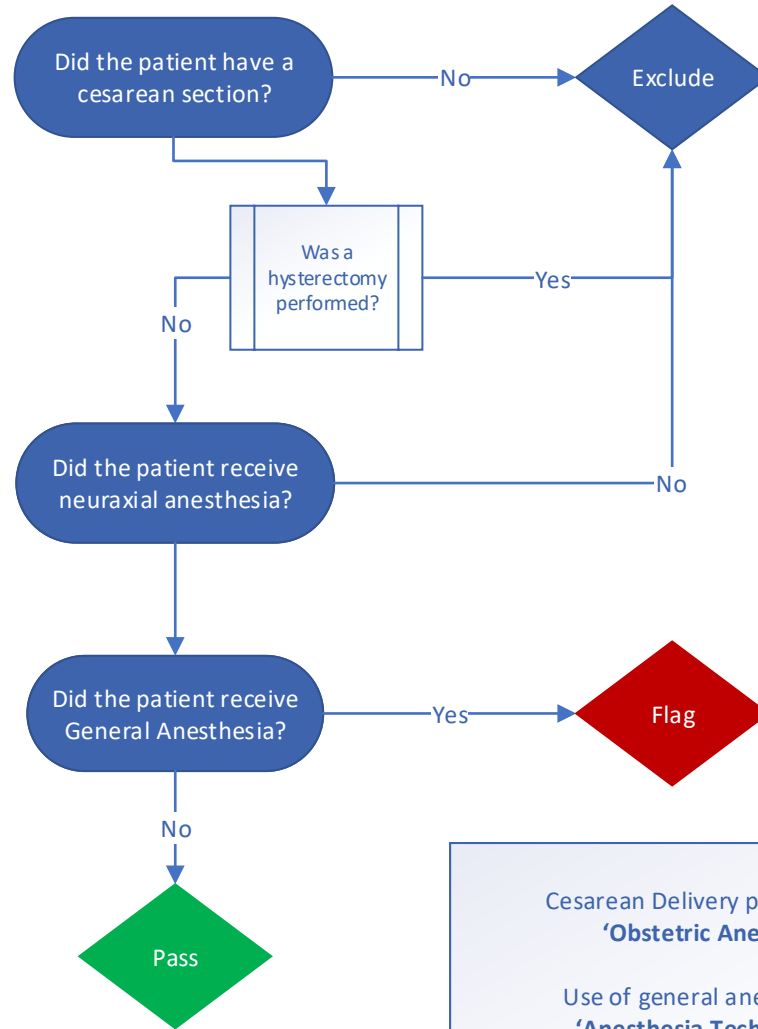


GA-02-OB Percentage of cesarean delivery cases where general anesthesia was administered after neuraxial anesthesia



Cesarean Delivery procedure is determined by the **'Obstetric Anesthesia Type' phenotype**

Use of general anesthesia is determined by the **'Anesthesia Technique: General' phenotype**

Use of neuraxial anesthesia is determined by the **'Anesthesia Technique: Neuraxial' phenotype**