

The Anatomy of Collaborative Improvement

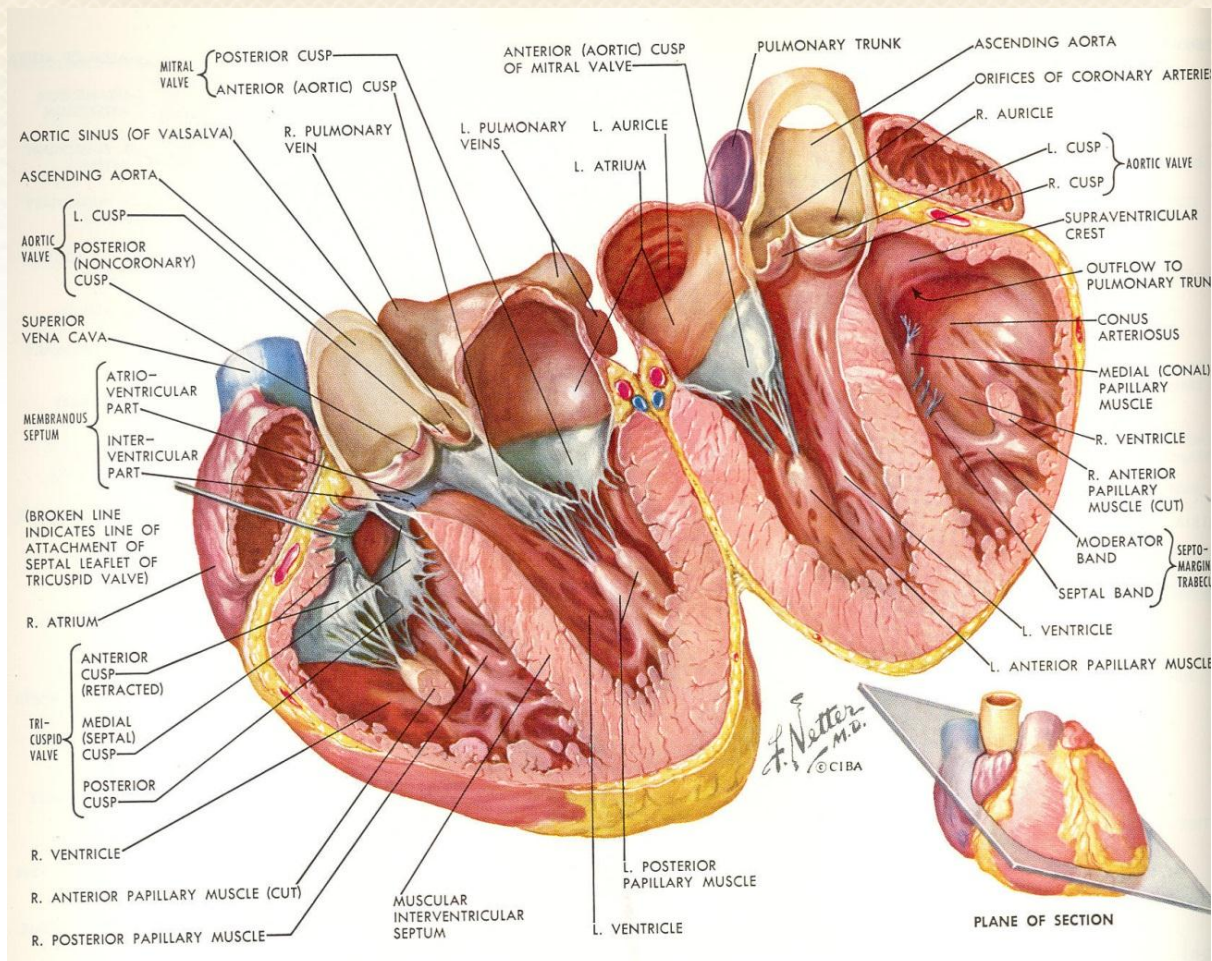
Greta L. Krapohl PhD, RN
Lieutenant Colonel, U.S. Army
(Retired)

Acknowledgment: The MSQC Team





Agenda

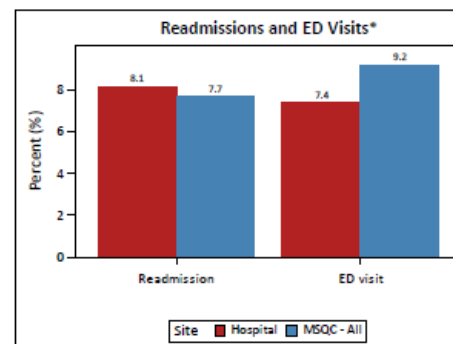
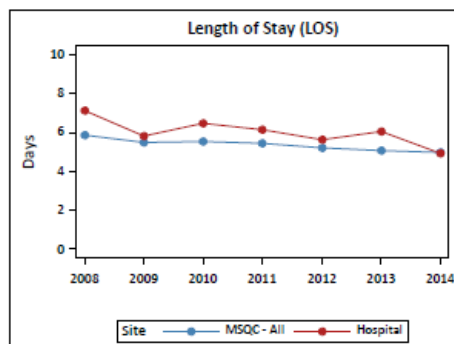
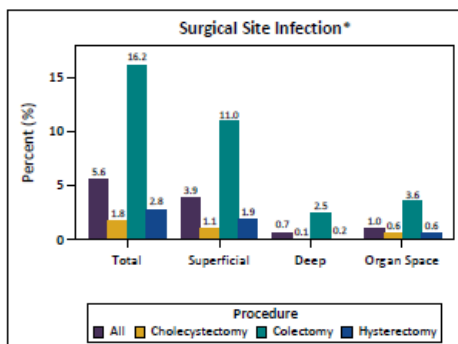
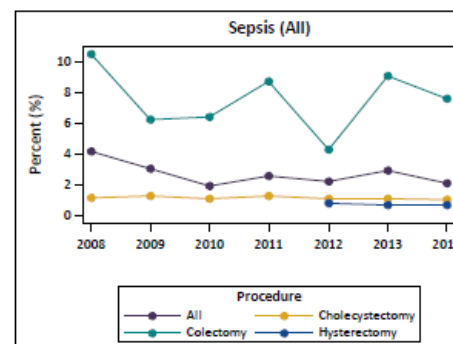
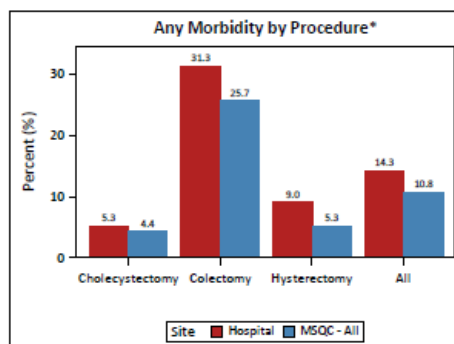
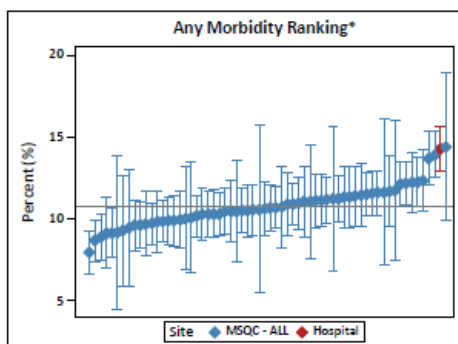


Agenda

- Introduction
- Dissection of the MSQC 'Quality Space'
 - Strong Data
 - Safe Data
 - Travel the blue highways
 - Be deviant (positively)
 - Innovate
 - Measure outcomes and improvement
 - Trust
 - Focus
 - Kick the tires
- Putting it all back together
- Conclusion Q&A

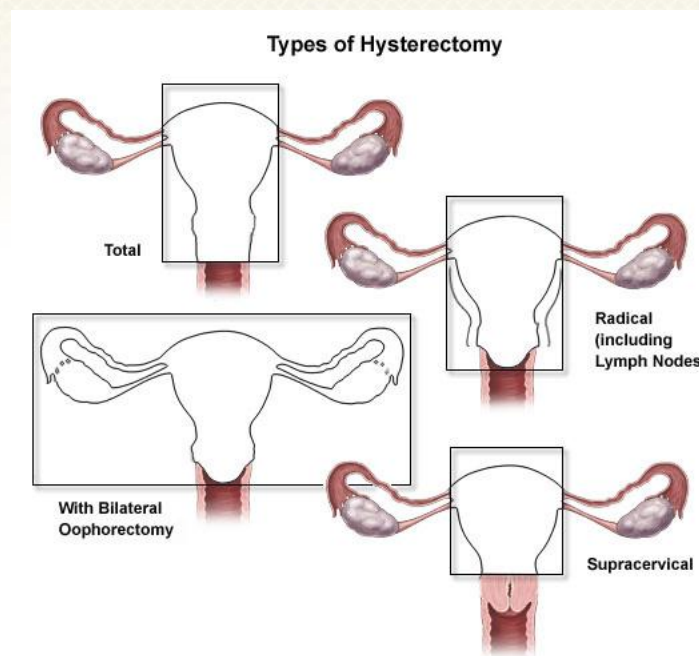


Executive Summary 2014



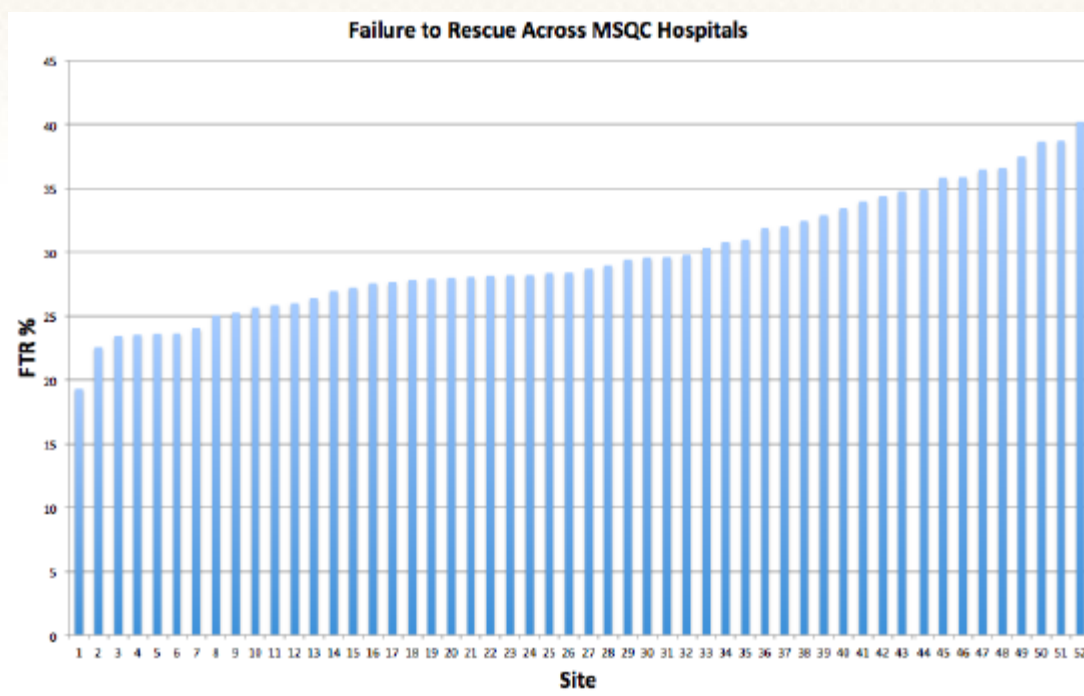
*Date Range: 07/01/12 - 06/30/14

- Definitions
 - Specimen weight

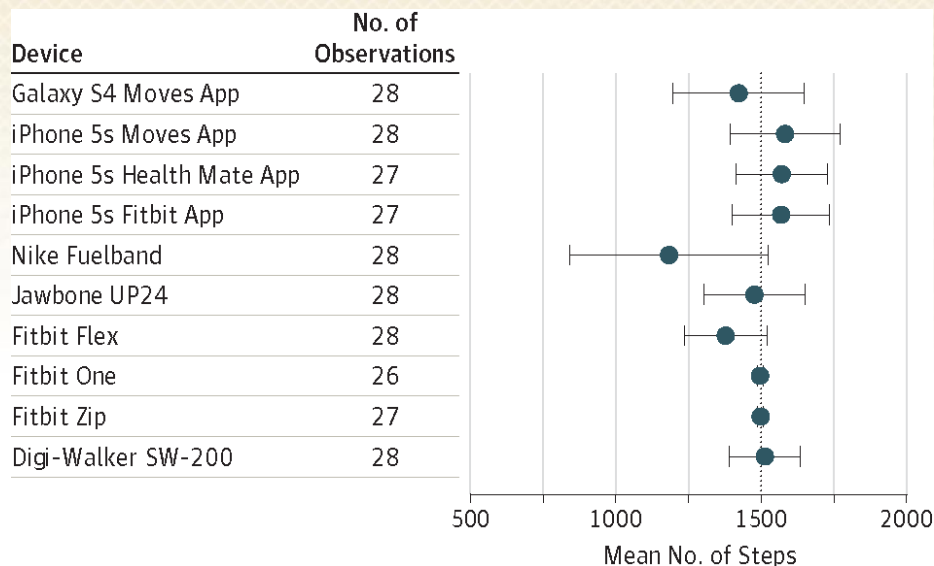


- Postoperative normothermia

- Failure to Rescue



- Inter-rater Reliability- measurement to assess the degree to which different people agree in their assessment decisions.
- Validity- measuring what we are supposed to be measuring



Accuracy of Smartphone Applications and Wearable Devices for Tracking Physical Activity Data

Meredith A. Case, BA¹; Holland A. Burwick²; Kevin G. Volpp, MD, PhD³; Mitesh S. Patel, MD, MBA, MS³

JAMA. 2015;313(6):625-626. doi:10.1001/jama.2014.17841.

Discharges starting October 1, 2014:

HAC

Understanding the Hospital-Acquired Condition Reduction Program

Beginning in FY 2015, the Hospital-Acquired Condition (HAC) Reduction Program, mandated by the Affordable Care Act, requires the Centers for Medicare & Medicaid (CMS) to reduce hospital payments by 1 percent for hospitals that rank among the lowest-performing 25 percent with regard to HACs.

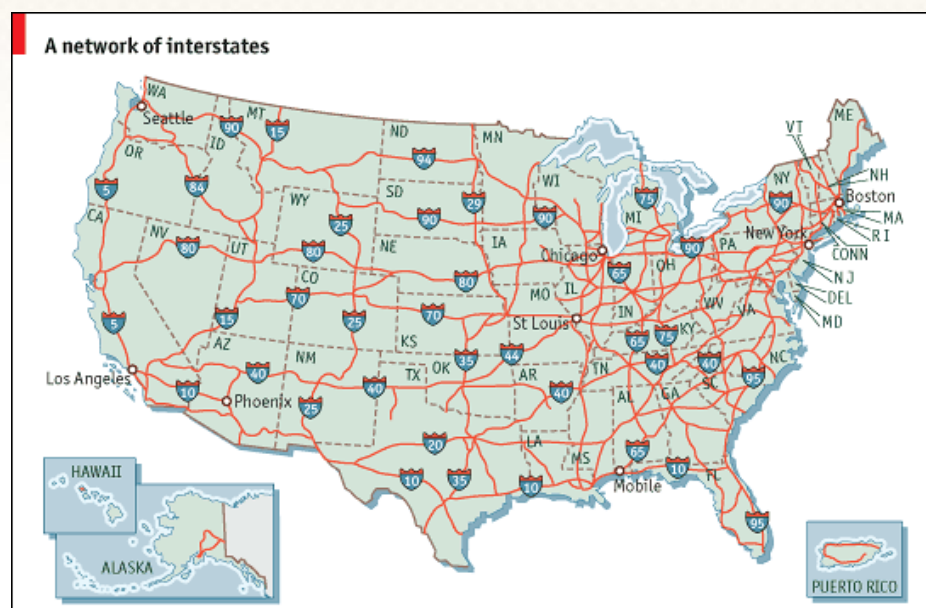
Hospital-Acquired Conditions are defined as: Conditions that patients acquire while receiving treatment for another condition in an acute care health setting.

Reduce hospital payment by 1% for hospitals that rank among lowest performing 25%



New Patient Safety Organizations Can Help Health Providers Learn From and Reduce Patient Safety Events. Clancy, Carolyn M. MD Journal of Patient Safety: 5(1): 1-2. 2009 June.

NIH roadmap could benefit from “blue highway” or practice-based research that connects major academic centers to rural areas.



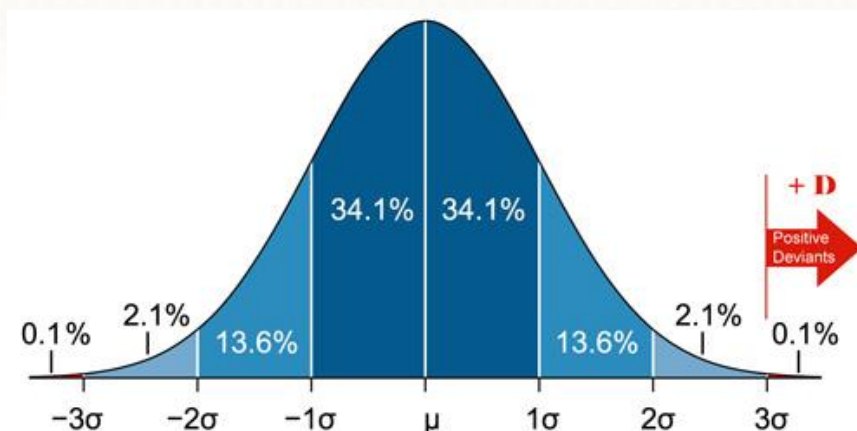
Practice-Based Research—“Blue Highways” on the NIH Roadmap

John M. Westfall, MD, MPH; James Mold, MD, MPH; Lyle Fagnan, MD

JAMA. 297(4):403-6, 2007 Jan 24.

Be Deviant (Positively)

MSQC follows the principles of “positive deviance” as an approach to identify practices that improve healthcare quality.



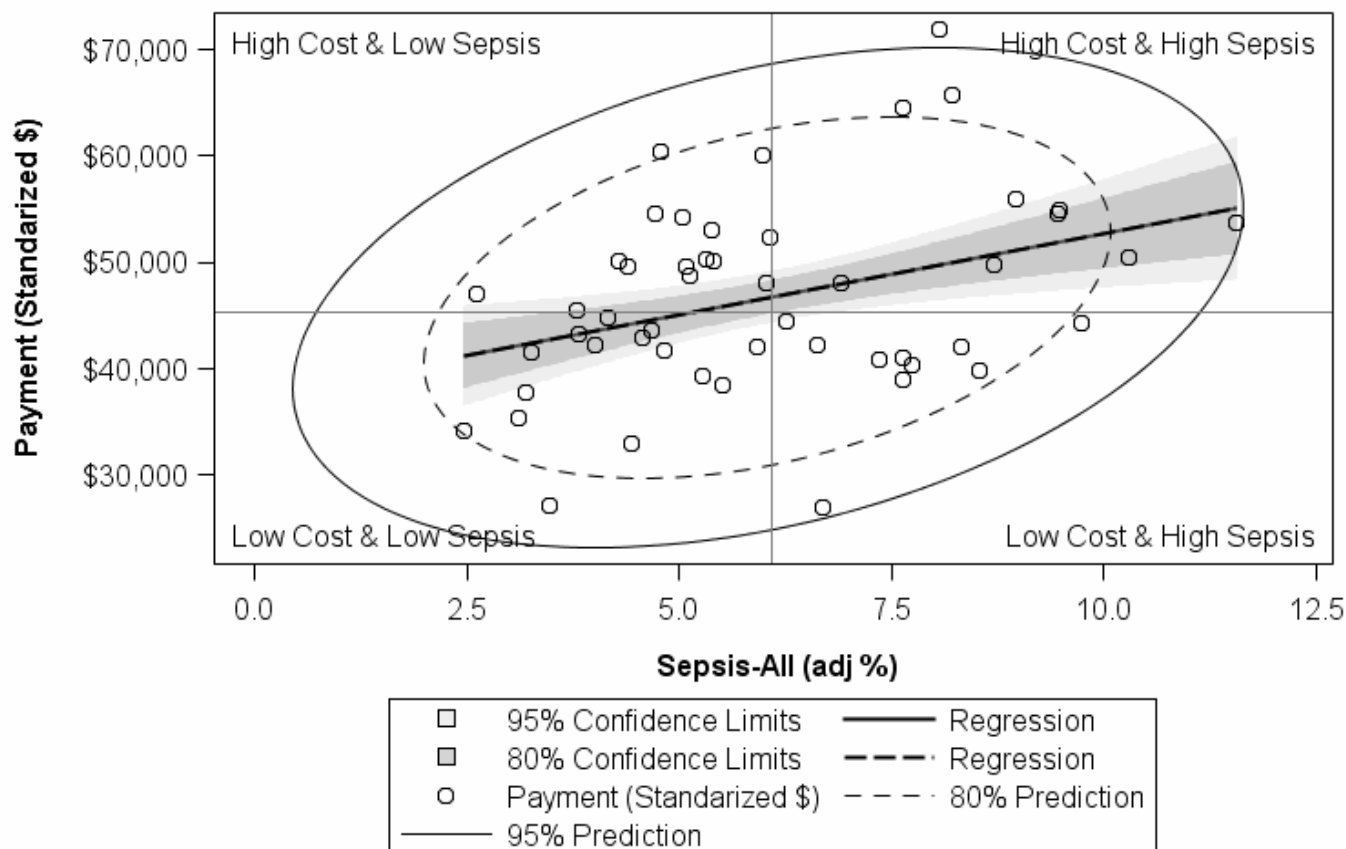
Research in action: Using positive deviance to improve quality of health care

Elizabeth H Bradley, Leslie A Curry, Shoba Ramanadhan, Laura Rowe, Ingrid M Nembhard and Harlan M Krumholz

Implementation Science. 4(25):1-11, 2009

Total Episode Payment vs. Sepsis-All by Hospital

Non-Emergent Colorectal (22 CPT codes), MSQC & MVC 2012-2013

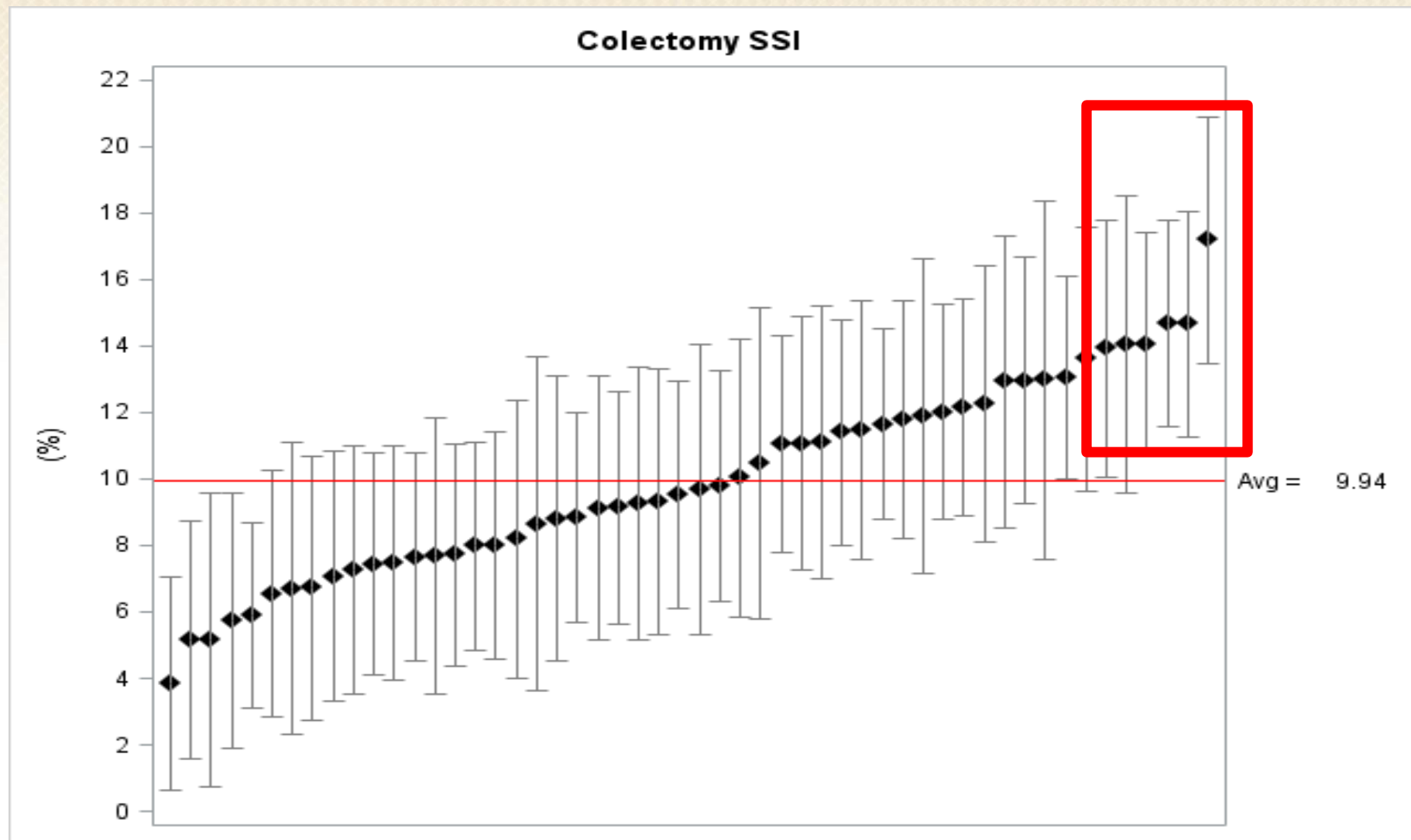




Speaks to the need for innovation in healthcare and breaking the dogma in medicine.

Big Med. Atul Gawande , The New Yorker, August 13, 2012

Measure Performance and Improvement







Kick the tires





Osborne NH, Nicholas LH, Ryan AM, Thumma JR, Dimick JB
Association of Hospital Participation in a Quality Reporting Program With Surgical Outcomes and Expenditures for Medicare Beneficiaries
JAMA 2015;313(5):496-504

Dissection of the MSQC 'Quality Space'

- Strong Data
- Safe Data
- Travel the blue highways
- Be deviant (positively)
- Innovate
- Measure outcomes and improvement
- Trust
- Focus
- Kick the tires



I have always thought of our collaborative as an organization that will “help you do what you do better.”

Skip

Questions?

Celebrating 10 Years of Collaboration

MSQC
2005
2015

Michigan Surgical Quality
Collaborative



Blue Cross
Blue Shield
Blue Care Network
of Michigan