

Quality Committee Meeting

November 27, 2023

10:00am - 11:00am Eastern Time



Agenda

Announcements

- Upcoming Events
- Outpatient Procedures Dashboard Available!
- OB Subcommittee Update

Measure Review

- AKI-01
- TOC-02

New Measures

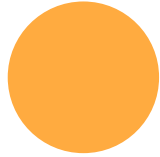
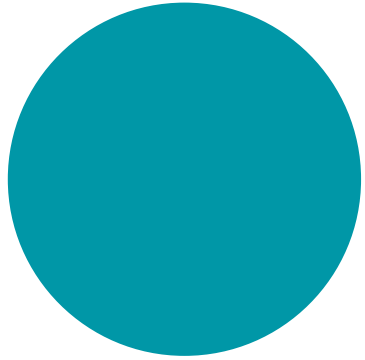
- NMB 04

Measure Update: NMB-02

Meeting Minutes

October 2023

Roll Call – via Zoom or contact
MPOG

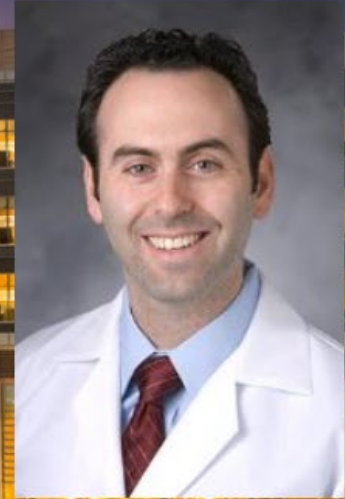


Announcements



Featured Member November and December

[MORE INFO](#)



Brad M. Taicher, DO, MBA
Duke University School of Medicine

2024 Meetings

Friday, April 12, 2024

MSQC/ASPIRE Collaborative Meeting
Schoolcraft College Vistatech Center
Livonia, MI

Friday, July 12, 2024

ASPIRE Collaborative Meeting
Henry Executive Center
Lansing, Michigan

Friday, September 13, 2024

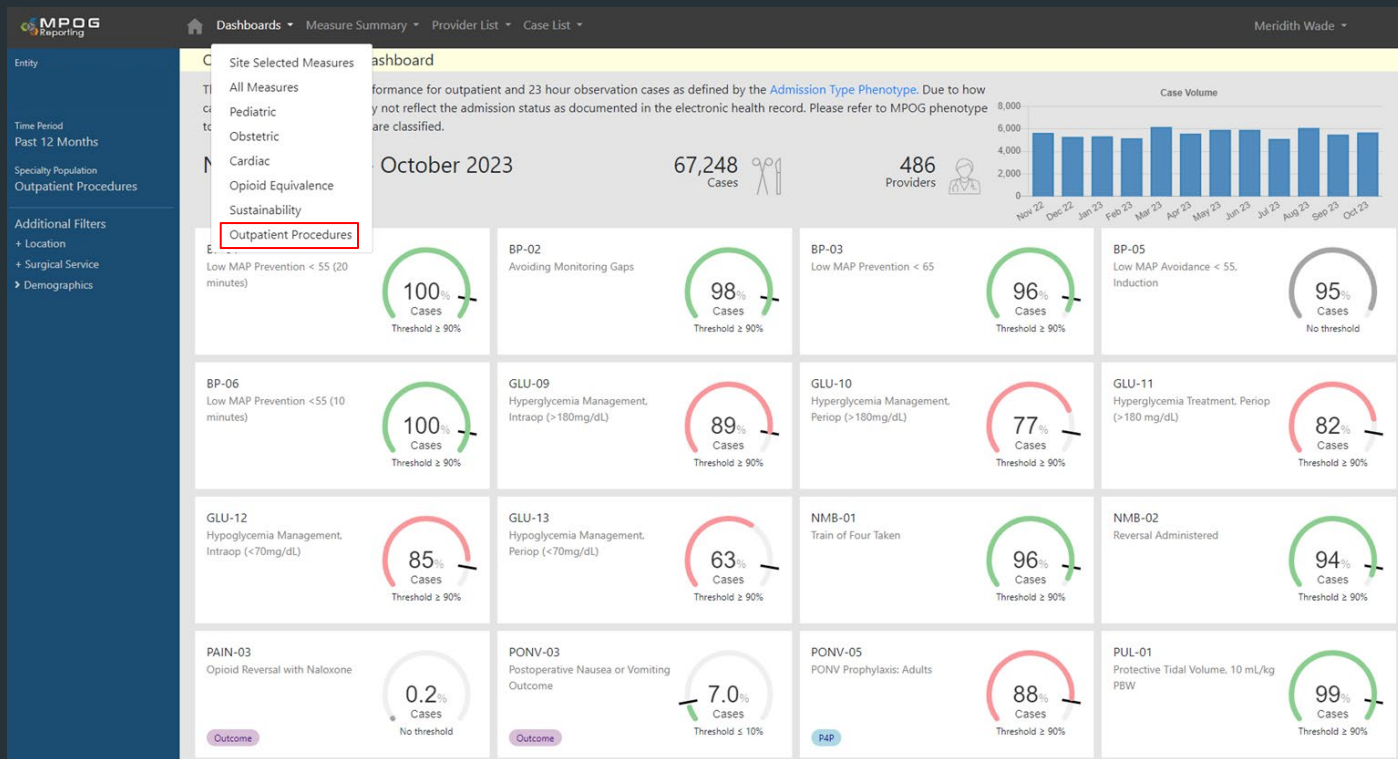
ACQR Retreat
Location TBD

Friday, October 18, 2024

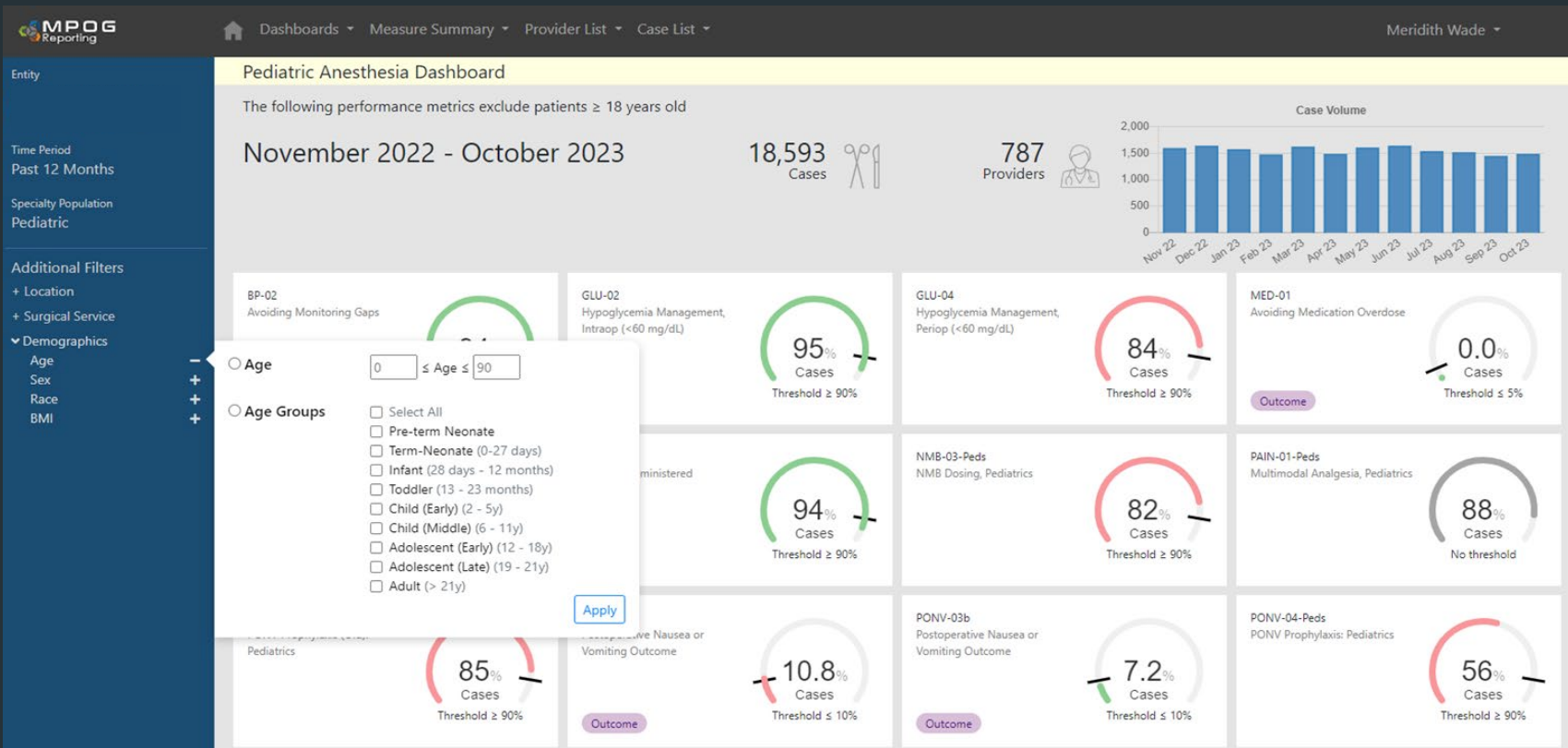
MPOG Retreat
Philadelphia, Pennsylvania

[Upcoming Events](#)

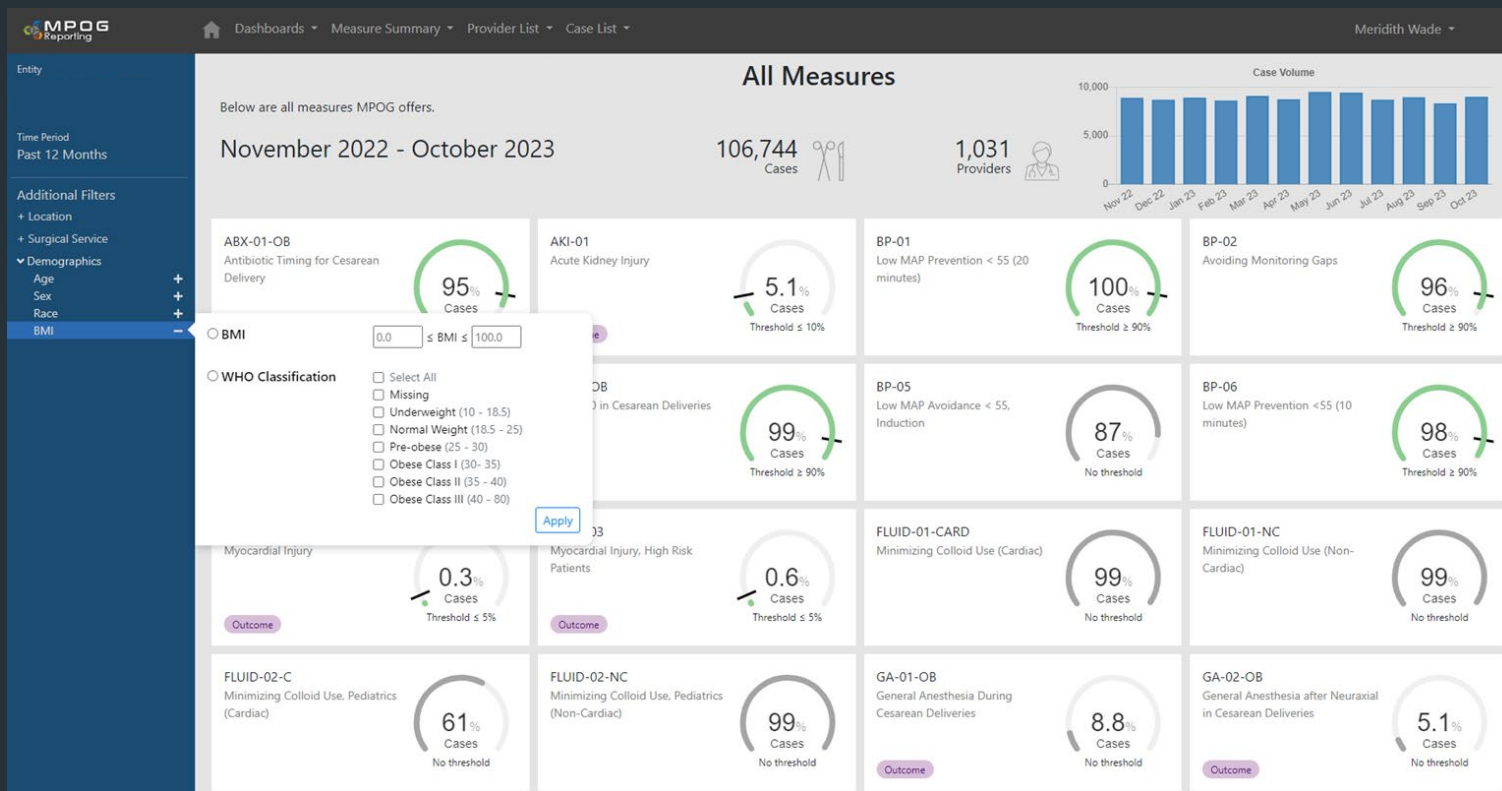
NEW Outpatient Procedures Dashboard



NEW Demographics Filter



NEW Multi-select Functionality

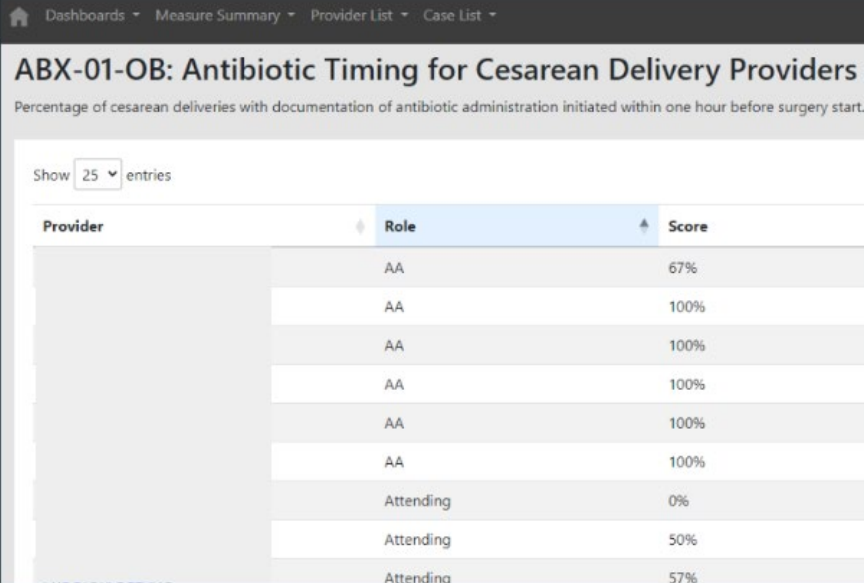


Certified Anesthesiologist Assistants (CAA)

Previously did not differentiate Certified Anesthesiologist Assistants in QI Reporting Tool (labeled as CRNAs)

As number of CAAs participating in MPOG QI has increased, we want to accurately reflect their care team roles

Will continue to combine both CAAs and CRNAs in a single comparison group for Provider Feedback emails.



The screenshot shows a web interface for a QI reporting tool. At the top, there are navigation links: Dashboards, Measure Summary, Provider List, and Case List. The main heading is "ABX-01-OB: Antibiotic Timing for Cesarean Delivery Providers". Below this, a subtitle reads: "Percentage of cesarean deliveries with documentation of antibiotic administration initiated within one hour before surgery start." There is a "Show 25 entries" dropdown. The table has three columns: Provider, Role, and Score. The data rows show that for the first six providers (all with role "AA"), the scores are 67%, 100%, 100%, 100%, 100%, and 100% respectively. The last three providers (all with role "Attending") have scores of 0%, 50%, and 57%.

Provider	Role	Score
	AA	67%
	AA	100%
	AA	100%
	AA	100%
	AA	100%
	AA	100%
	Attending	0%
	Attending	50%
	Attending	57%

Release Notes can be found on our website



[About](#)

[Sites](#)

[Research](#)

[Quality](#)

[Tools](#)

[Downloads](#)

[News/Events](#)

**Call for Applications for the MPOG
Outcomes Research Fellowship**

[MORE INFO](#)

[DataDirect](#)

[Concept Browser](#)

[Phenotype Browser](#)

[QI Reporting Tool](#)

[Quality Case Reports](#)

[Provider Contacts](#)

[Release Notes](#)

OB Subcommittee

Met on Wednesday, November 8, 2023

Meeting Summary:

- Accepted applications for Vice-Chair position (will announce results to OB subcommittee very soon)
- Reviewed [BP:04](#) - Voted to continue as is
- Discussed uterotonic agent use, blood loss and transfusions for cesarean delivery
- Minutes posted to the [website](#)

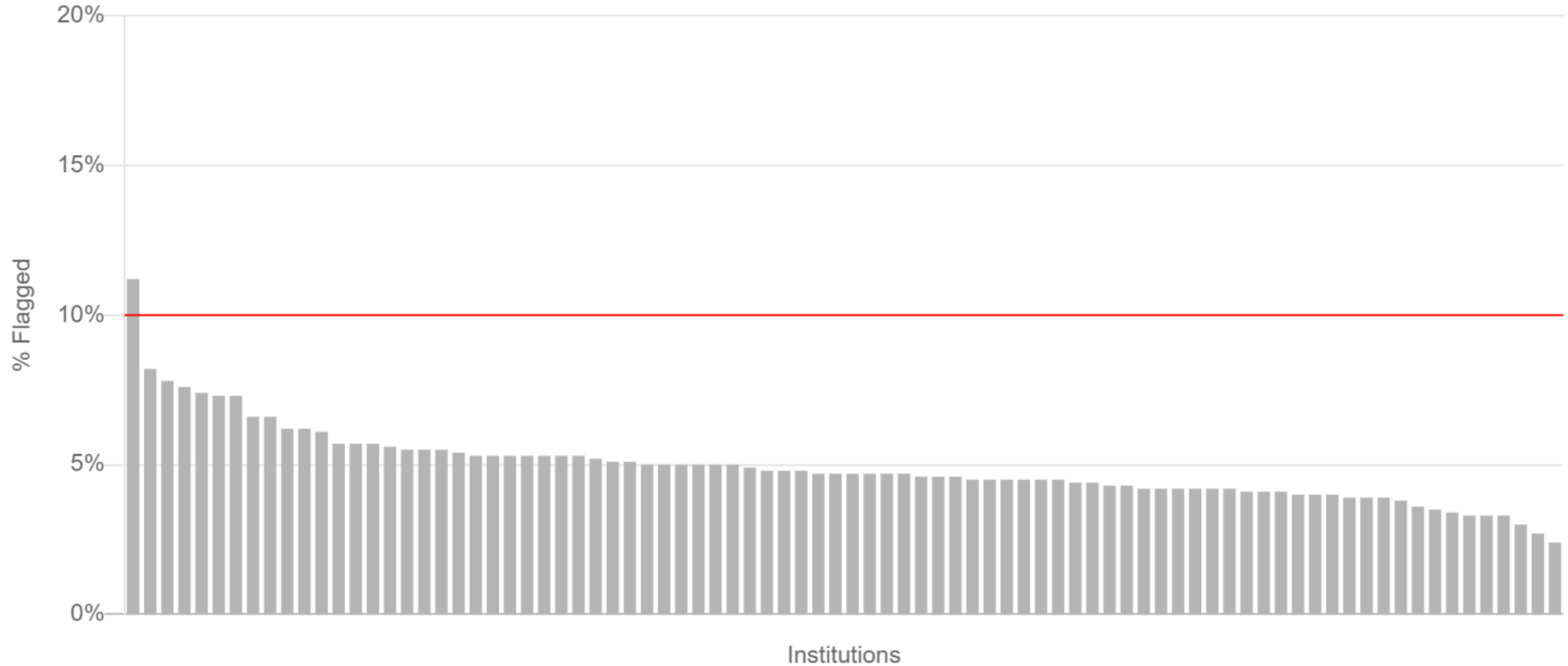
Next Meeting: Wednesday, February 7, 2024 at 1pm EST





Measure Review: [AKI-01](#)
Mike Mathis
University of Michigan

AKI-01 Performance across MPOG



Avoiding Acute Kidney Injury Vote

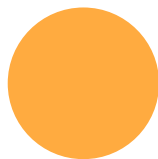
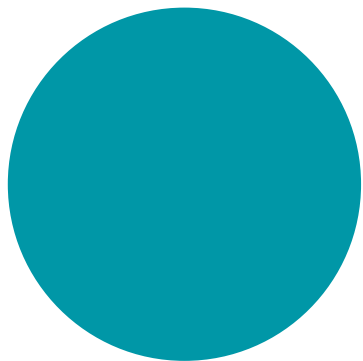
1 vote/ site

Continue as is/ modify/ retire

Need > 50% to retire measure

Coordinating center will review all votes after meeting to ensure no duplication



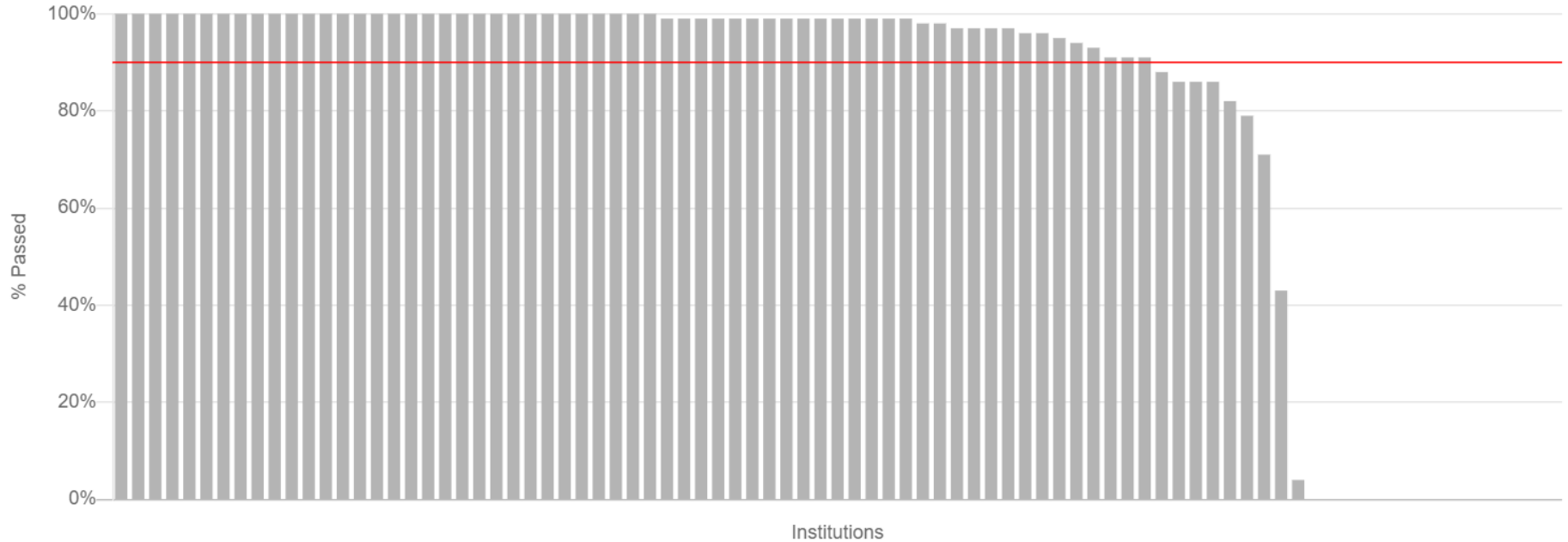


Measure Review: [TOC-02](#)

Jing Tao

Memorial Sloan Kettering

TOC-02 Performance across MPOG



TOC-02: Handoff to PACU Vote

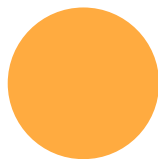
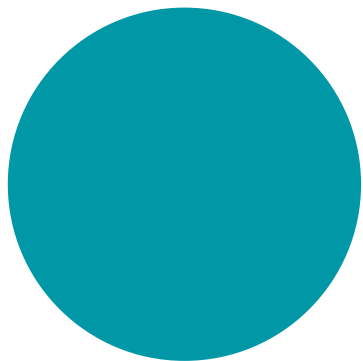
1 vote/ site

Continue as is/ modify/ retire

Need > 50% to retire measure

Coordinating center will review all votes after meeting to ensure no duplication





New Measures



NMB-04: Variation in Sugammadex Dosing

Description: Percentage of cases with sugammadex administration where cumulative sugammadex dose ≤ 200 mg OR ≤ 3 mg/kg.

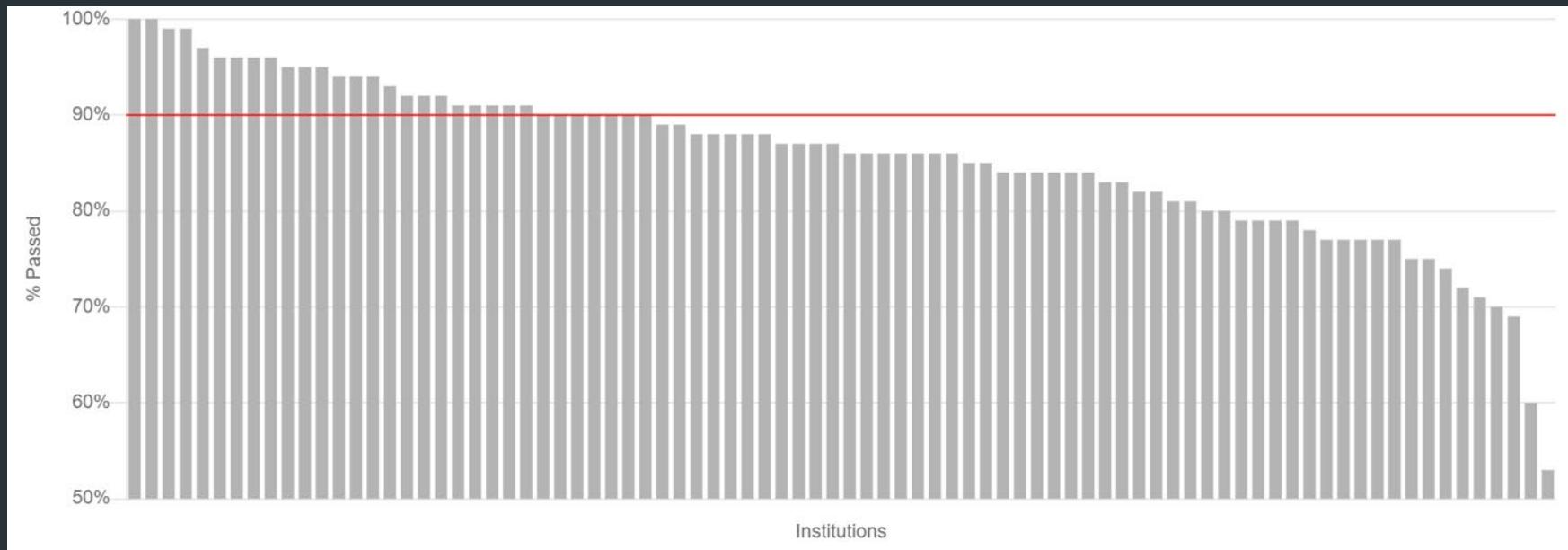
Measure Time period: Anesthesia Start to Earliest Extubation (if none, PACU end)

Exclusion:

- Age ≤ 2 yrs
- ASA 5 and 6 cases including Organ Harvest (CPT: 01990)
- Cases < 30 min
- Patients that were not extubated in the immediate postoperative period (as defined by the Postoperative Destination phenotype). This excludes: patient transported to ICU, patient transported to another destination and intraoperative mortality (phenotype values 0, 2 and 3).

Success: Cases where cumulative sugammadex dose was ≤ 200 mg or ≤ 3 mg/kg.

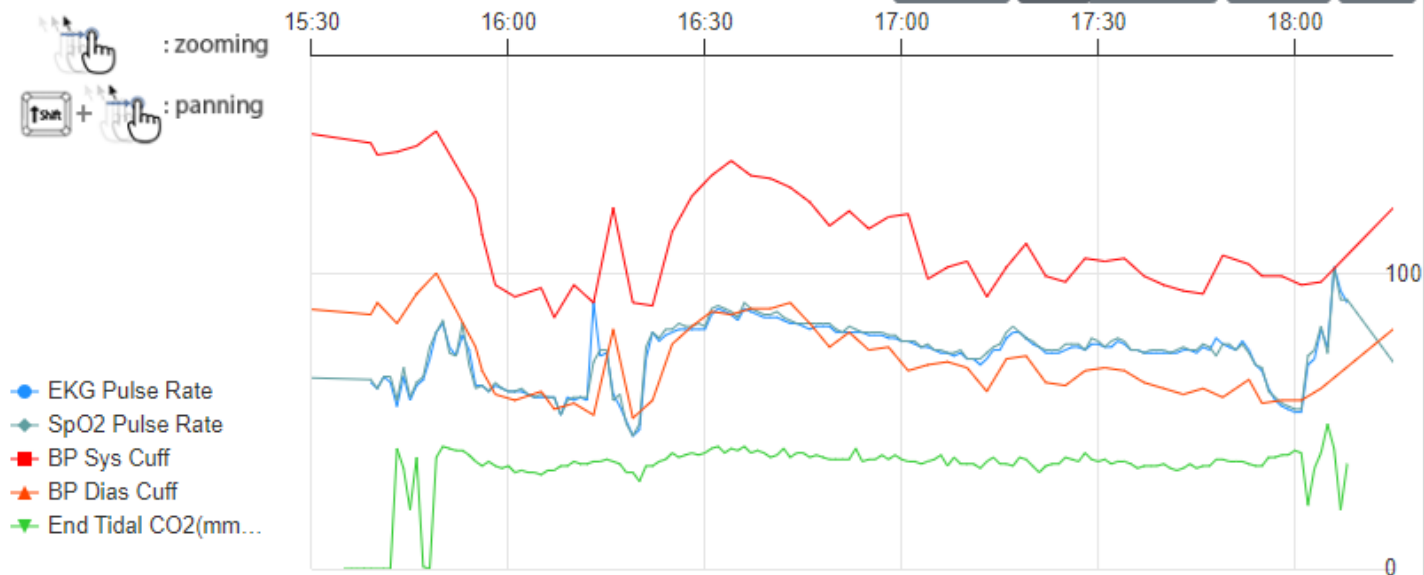
NMB-04: Variation in Sugammadex Dosing



Procedure

(Actual)(MPOP)Laparoscopic right adrenalectomy (Right)

Main Chart



Times

[+]

All Staff

[+]

NMB

[-]

ROCURONIUM

50 MG

SUGAMMADEX

10 MG

Patient Extubated

Train-of-four Qualitative (Subjecti

0/4

0/4

0/4

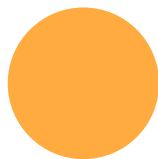
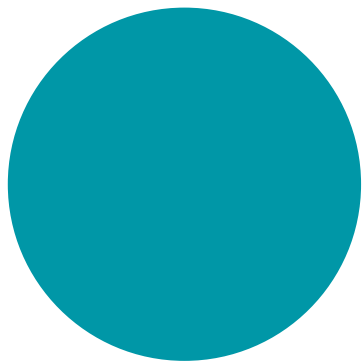
2/4

4/4

300 MG

Ext

4/4



Measure Updates



NMB-02: Appropriate Reversal

The measure was last reviewed by the Quality Committee in 2021 and the following changes were recommended:

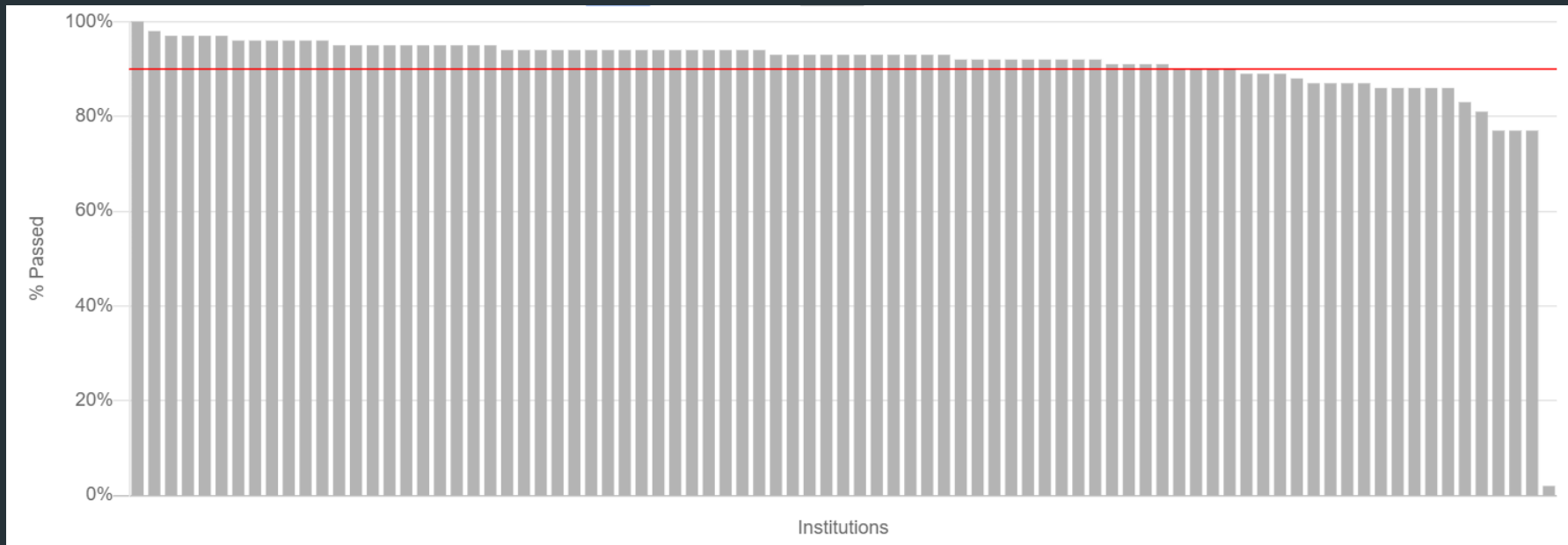
1. Remove cardiac exclusion
2. Remove defasciculating dose exclusion
3. Remove the following success criteria: 3 hours between last dose of NMB and extubation does not require reversal for adults (2 hours for pediatric patients)

Examples of cases that may have previously passed but are now flagged include:

1. Long spine cases where TOF ratio was measured only by neuromonitoring team and not documented in the anesthesia record. Reversal not given based on neuromonitoring team TOF ratio measurements.

Score changes ranged from -7% to +1%. As you review cases, please contact the CC with feedback.

NMB-02: Appropriate Reversal





Thank You!