



MSQC

MICHIGAN **SURGICAL** QUALITY
COLLABORATIVE

Quarterly Collaborative
Meeting

April 21, 2023

Englesbe Disclosures

- Salary support several State, Federal, and BCBSM sources
- Equity stakeholder in Eubu Health
- Today I am speaking as the Director of the MSQC. I also serve as the Director of the CQI Portfolio





CQI

COLLABORATIVE QUALITY INITIATIVES



Nonprofit corporations and independent licensees of the Blue Cross and Blue Shield Association



Sachin Kheterpal, MD, MBA

Executive Director,
Multicenter Perioperative Outcomes Group and
Anesthesiology Performance Improvement and
Reporting Exchange

CONGRATULATIONS

to Dr. Sachin Kheterpal on his election to the
National Academy of Medicine!

It is considered the highest honorary society in the country for researchers in the fields of health and medicine.



December 2022 Attestation MOCA Part 4 ASPIRE Provider Feedback Activity

* Your initial score is from **November 2022**

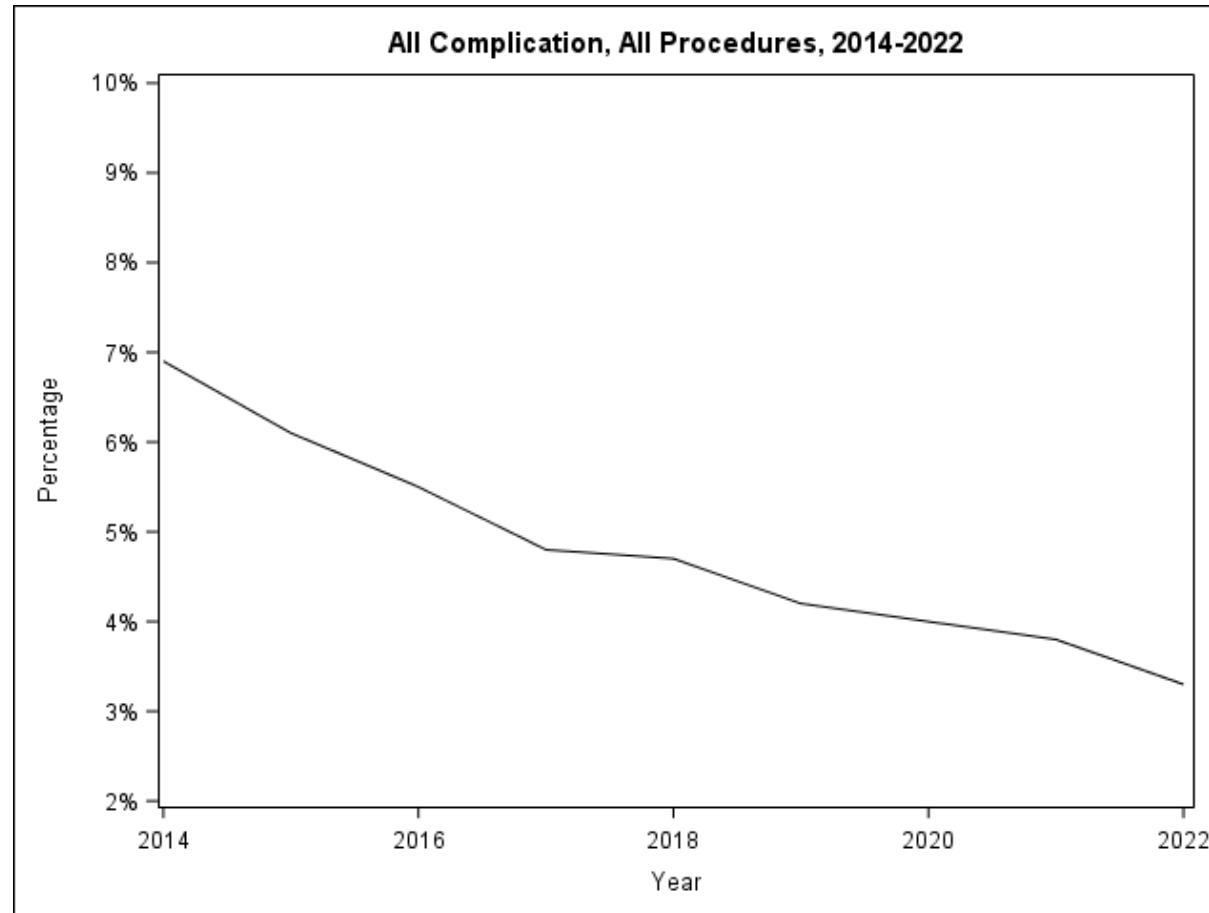
▼ Measure #1: Postoperative Nausea or Vomiting Outcome (PONV03)						Your Initial Score: 87.44%	Your Current Score: 87.61%
Last Month's Failed Cases:						View measure specification	
Case Viewer	MPOG Case ID	Date of Service	Procedure	Attending(s)	CRNA/Resident(s)		
Open	BEE10EDF-2E6B-ED11-9135-005056B4993C	11/22/2022 10:00	(Actual)MULTIPLE SITES THYROIDECTOMY MULTIPLE SITES NECK DISSECTION				
Open	151EF5A5-AE65-ED11-9135-005056B4993C	11/15/2022 07:30	(Actual)MIDLINE OPEN FRONTAL SINUS EXPLORATION - BICORONAL APPROACH				
Open	9EAF13FC-8962-ED11-9135-005056B4993C	11/11/2022 07:30	(Actual)LEFT SHOULDER ARTHROPLASTY REVERSE				
Open	2603238C-2E60-ED11-9135-005056B4993C	11/08/2022 10:00	(Actual)MIDLINE THYROIDECTOMY				
Open	F0979FF3-A55A-ED11-9135-005056B4993C	11/01/2022 13:00	(Actual)LEFORT I OSTEOTOMY WITH BSSO				
▶ Measure #2: Low Map Prevention < 65 (BP03)						Your Initial Score: 84.83%	Your Current Score: 86.26%
▶ Measure #3: PONV Prophylaxis: Adults (PONV05)						Your Initial Score: 74.37%	Your Current Score: 73.19%
▶ Measure #4: Smoking Tobacco Status Documentation (SMOK01)						Your Initial Score: 67.02%	Your Current Score: 66.27%
▶ Measure #5: Fresh Gas Flow, less than or equal to 2L/min (SUS04)						Your Initial Score: 38.60%	Your Current Score: 40.64%

Attention: The attestation page has been recently modified to require ALL failed cases to be reviewed before completing the attestation. To earn 5 points per measure, the provider **must** review failed cases for each selected measure and complete 12 attestations within an 18-month period. Providers can earn 5 points per measure for 5 measures, totaling 25 points. The attestation period for each month extends to the last day of the following month.

By clicking the acknowledgment button below, I attest that I have reviewed this month's failed cases.

Yes, I've reviewed my failed cases.

Progress on complications in Michigan





New targets for QI within the MSQC

Consideration for changing our approach to data

- Appropriateness – right operation, right patient, right time
- Patient centered outcomes – are you satisfied with your hernia repair
- Cancer specific outcomes – disease free survival
- Health equity and health behaviors – longitudinal outcomes in our patients
- Measures of provider and patient dignity and autonomy



MSQC-HR

MICHIGAN SURGICAL QUALITY
COLLABORATIVE - HERNIA REGISTRY

COLLABORATIVE PARTNERSHIP



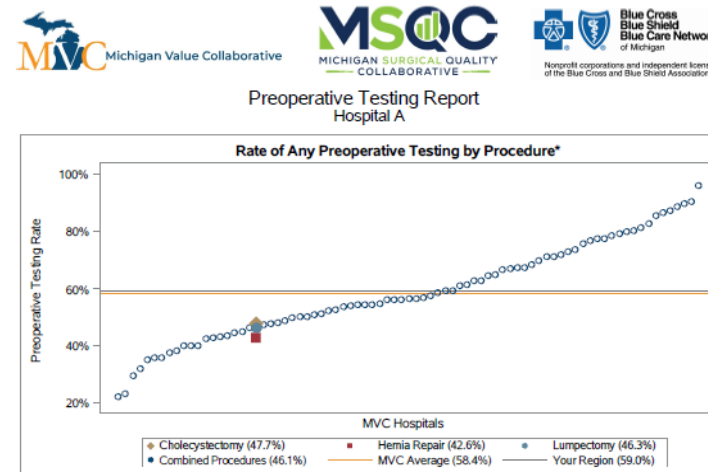
Statewide P4P QI option with great hospital participation – 32 sites



Statewide P4P value metric, hospital reporting & engagement

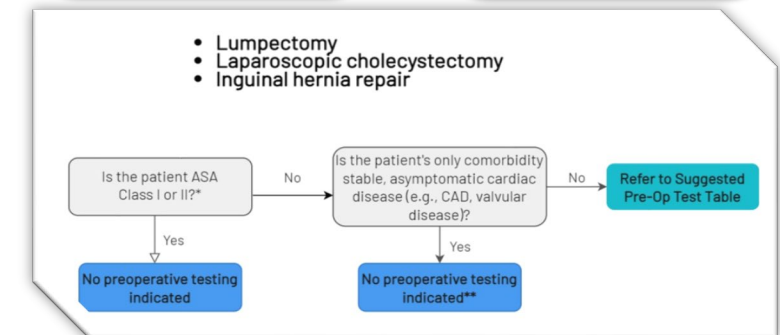


Developed clear guidelines to de-implement low-value tests (based on baseline data & learnings)



LEARN FROM DATA & CLINICIAN INPUT

RECOMMEND HIGH-VALUE TESTS ONLY



Recap of Right-sizing Pre-op Testing & De-implementing Low-value tests

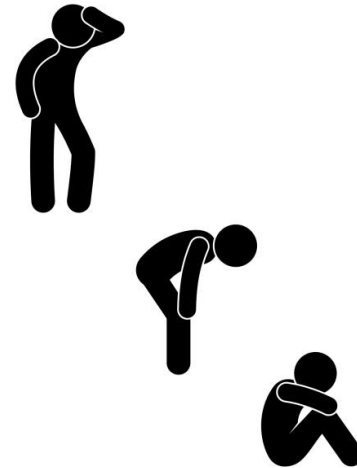
Increases Pre-op Efficiency



Reduces clinician effort



Reduces patient burden



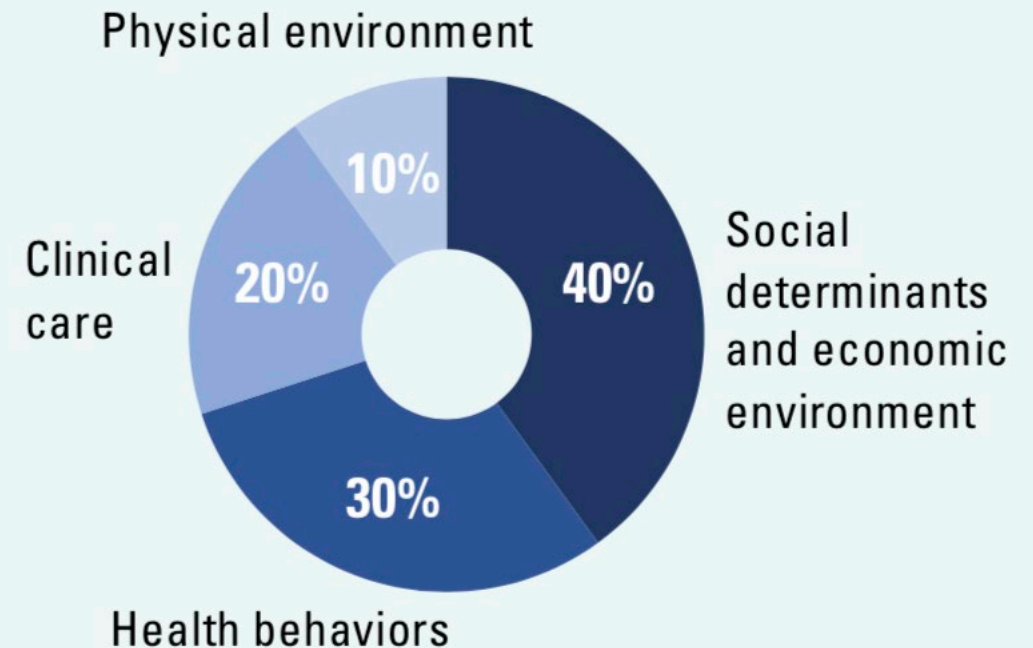
Reduces patient harm



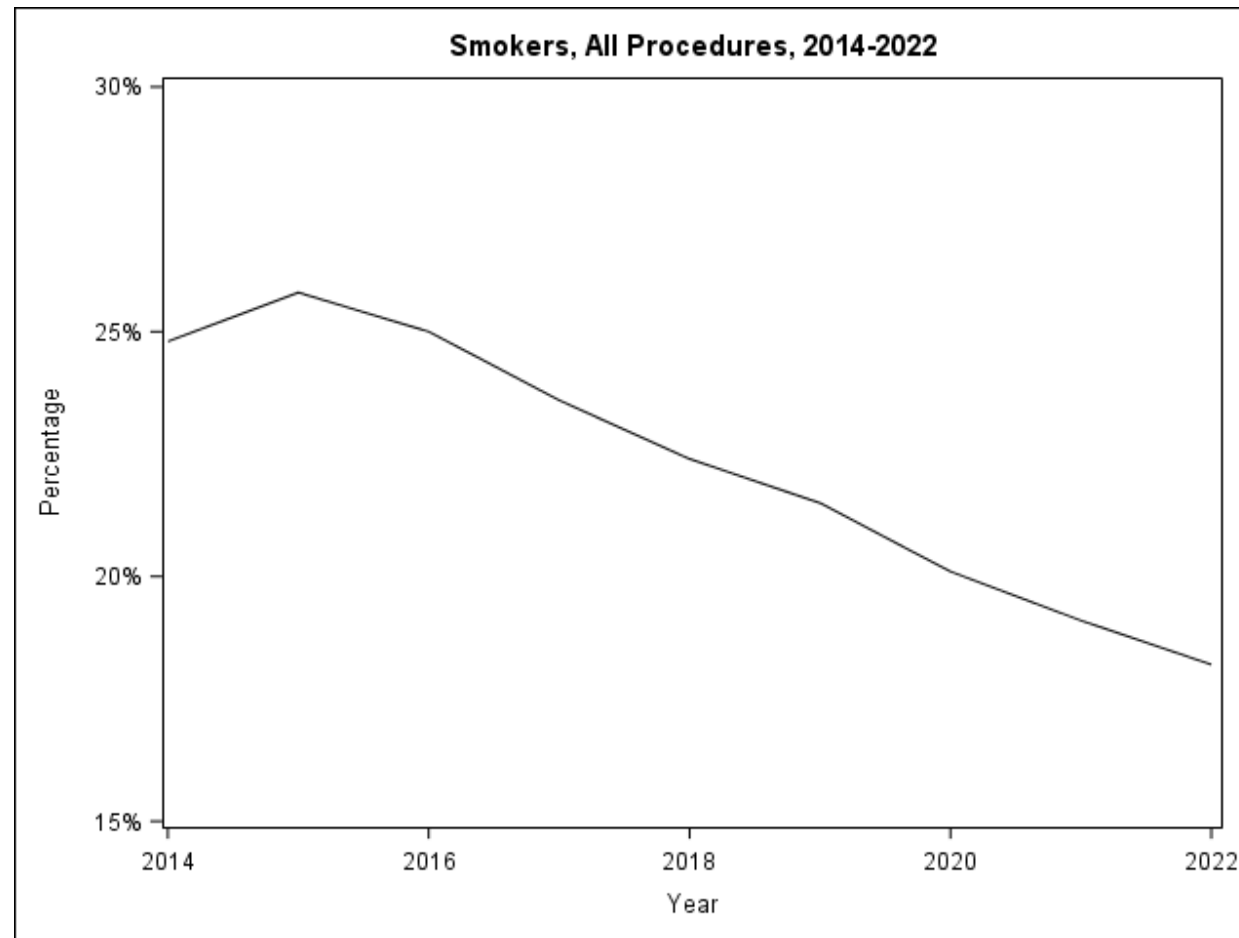
Social determinants of health have twice the impact on overall health outcomes of clinical care

- Current design of the US healthcare system not well aligned with actual drivers of health
- Clinical care accounts for only 20% of patients' health outcomes, yet for the overwhelming majority of health care spending
- Little investment has been made in addressing the social determinants of health, which account for 40% of health outcomes

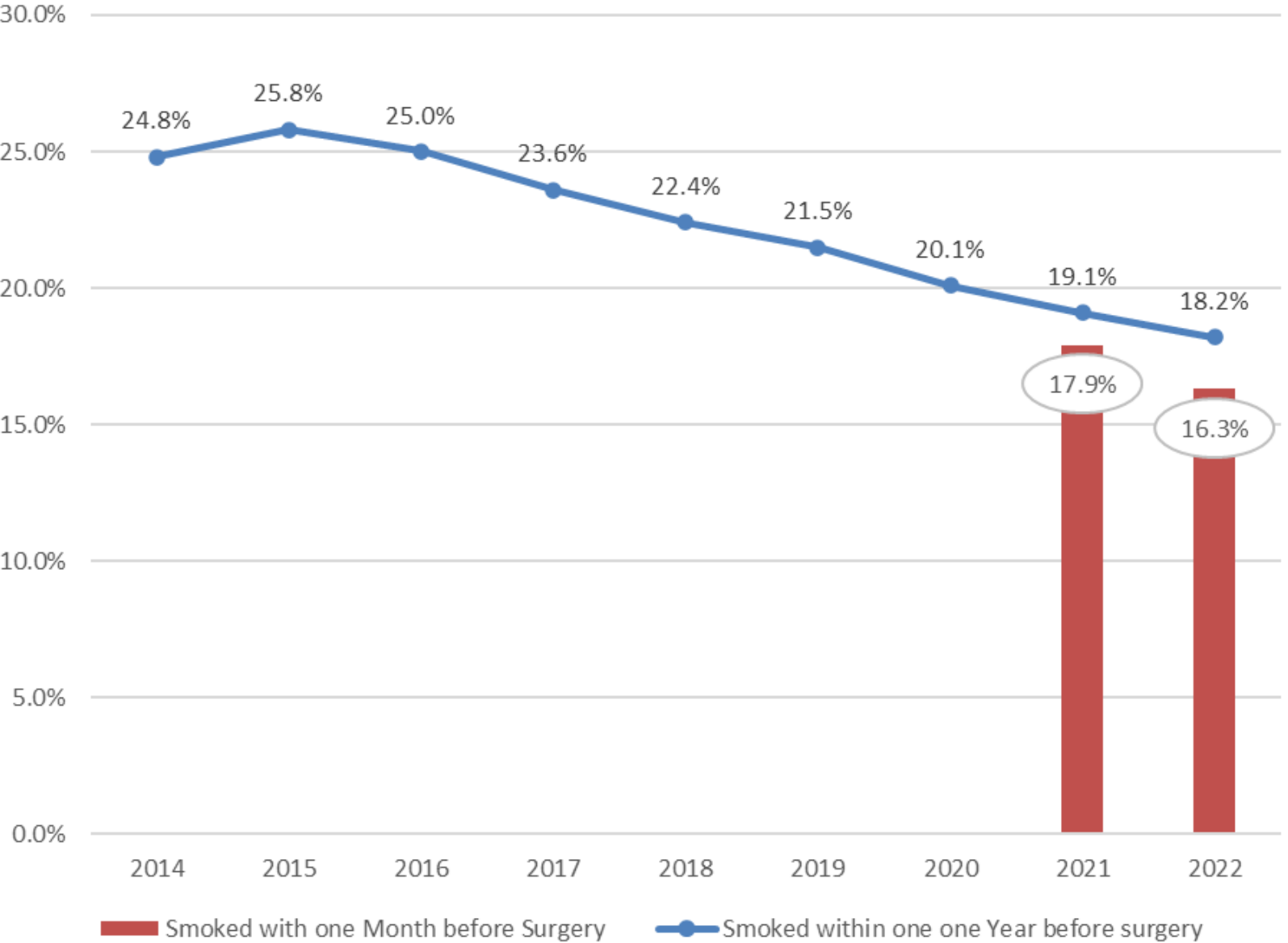
Social determinants of health account for 40% of health outcomes.



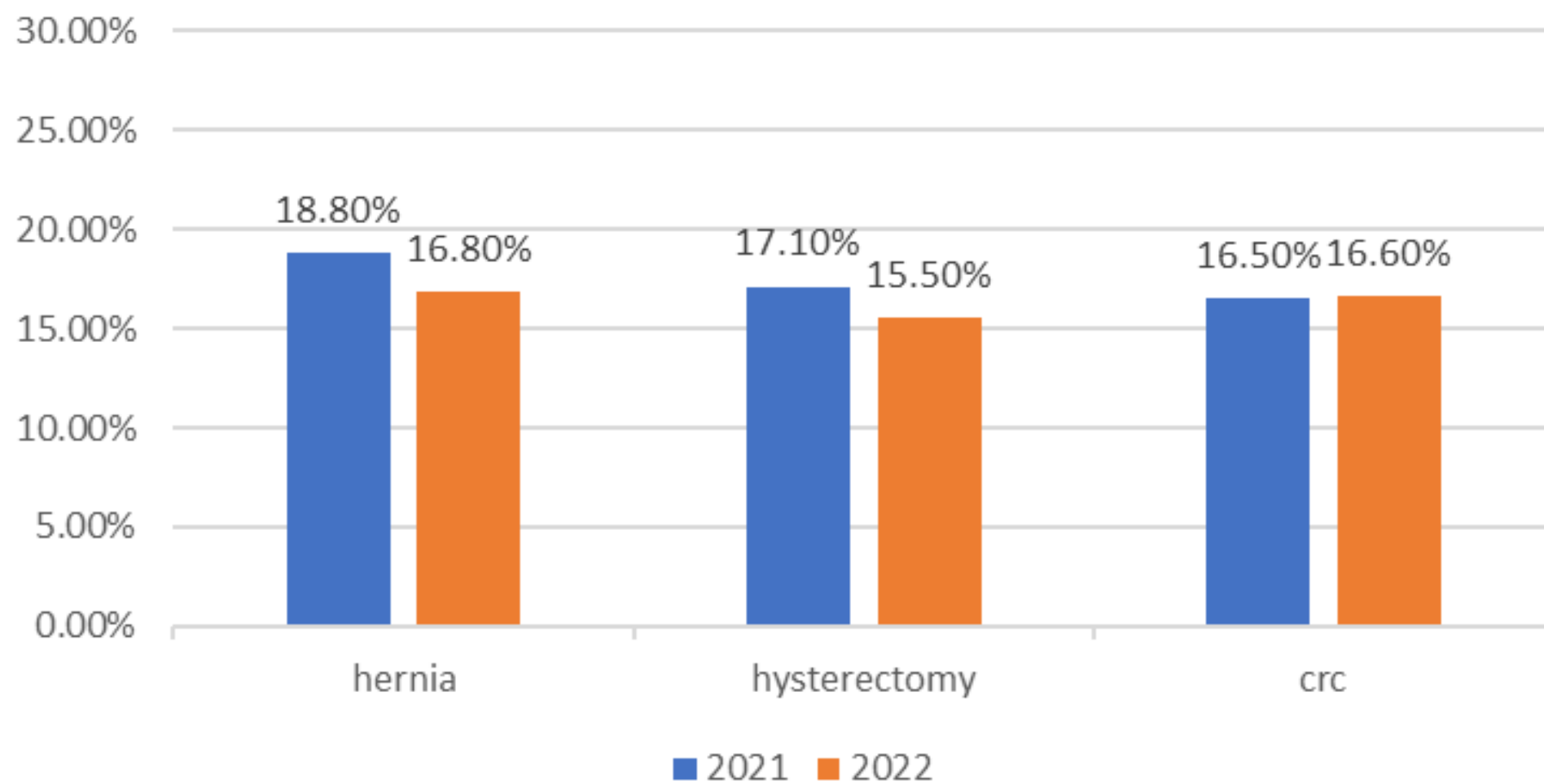
MSQC and smoking cessation



Smokers, All Procedures, 2014-2022



Smoked within 30 days before surgery





Make Every
Contact Count