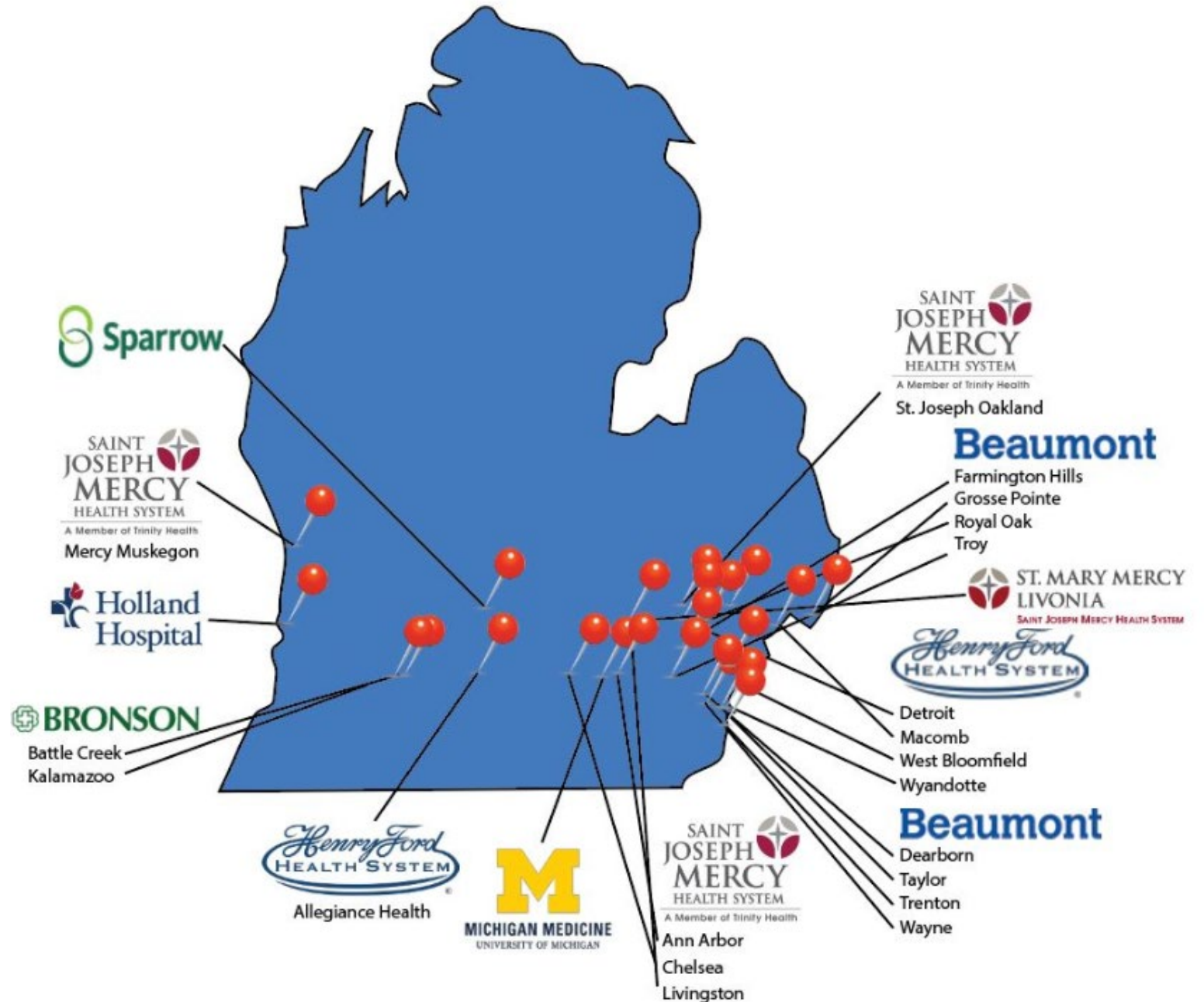


ASPIRE Collaborative Meeting

July 17th, 2020



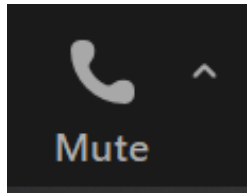
Agenda

9:00 – 9:25	MPOG Business and Updates Nirav Shah, MD Kathryn Buehler, MS, RN, CPPS MPOG
9:25 – 9:45	Anesthesia Considerations & Precautions for Ramp Up of Operations following COVID 19 Peak Pandemic Gary Loyd, MD Henry Ford Health
9:45 – 10:15	Why Diversity Matters Matthew Wixson, MD Michigan Medicine
10:15 – 10:30	Break
10:30 – 12:00	Performance Review Nirav Shah, MD Mike Mathis, MD Douglas Colquhoun, MB ChB, MSc, MPH MPOG

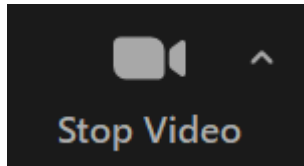
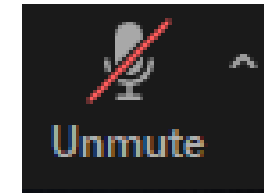
Housekeeping

- All participants will be muted on entry
- Unmute yourself to participate but remember to re-mute yourself when complete
- We encourage attendees to use video
- To obtain CME credit, please make sure your Zoom display name is correct (first and last name)
- Feel free to use Zoom chat during the meeting - we will monitor

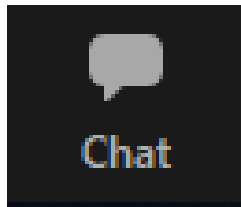
Zoom Helpful Hints



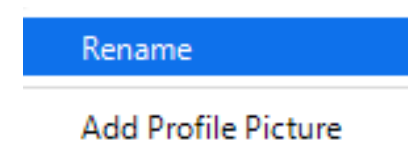
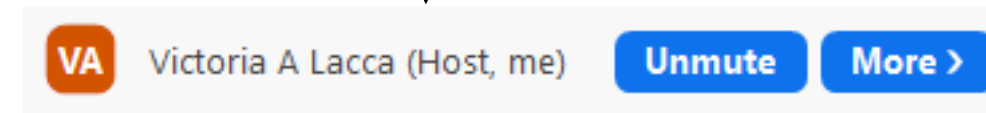
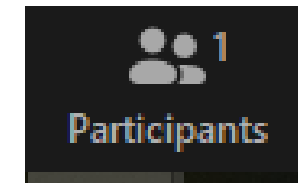
Unmute / Mute (redline)



Start / Stop Video (red line)
Tip: Make sure your camera is on



← Zoom Chat
Rename display →

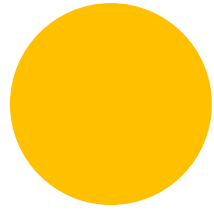
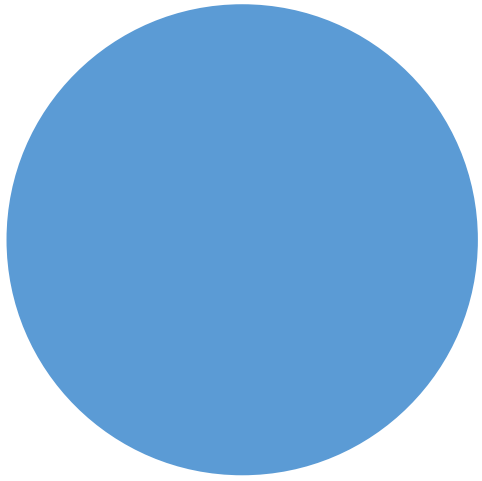


Post Meeting Information

- On our website:
 - Recorded keynotes
 - Presentation slides (except performance review)
 - Meeting summary and notes
- CME information will be sent to all participants via e-mail after the meeting

MPOG Business

- Upcoming Events
- New Dashboard – Kate Buehler
- AKI Toolkit – Kate Buehler
- Mortality data in ASPIRE
- Research projects using ASPIRE data



Upcoming Events



MPOG Annual Retreat

October 2nd 2020

Virtual



Welcome!



Henry Ford Wyandotte
Jimmy Boutin, MD
Daniel Mekasha, MD
ACQR: Jessica Wren, BSN, RN



Henry Ford Macomb
Merajuddin Khan, MD
ACQR: Jessica Wren, BSN, RN

Henry Ford Allegiance
Eric Davies, MD
Gary Loyd, MD
ACQR: Jessica Wren, BSN, RN

MPOG Featured Member

July and August 2020

[MORE INFO](#)



William Hightower, MD

Henry Ford Health System

West Bloomfield



2020 P4P Changes (pending BCBSM approval)

- Adjusting the attendance credits to 3 – 4 / 4 meetings (March meeting canceled.)
- Site based meetings can be virtual depending on your site's current policies
- Cohort 5 and Trinity upload dates will be adjusted due to COVID-19
- Performance measure changes – TBD, need more data



Dashboard 2.0

Dashboard 2.0

- Available for beta testing now: Quality Champions & ACQRs only
- Provider emails still link to existing dashboard displaying individual provider performance
- Existing dashboard still available- will retire old dashboard by MPOG retreat in October
- Submit feedback to coordinating center: support@zendesk.mpog.org



[About](#) [Join](#) [Research](#) [Quality](#) [Tools](#) [Downloads](#) [Events / News](#)

Departmental Dashboard: Selected Measures

Entity
Institution A

Time Period
Past 12 Months

- + Patient Age
- + Provider Type
- + Race/Ethnicity
- + Surgical Service

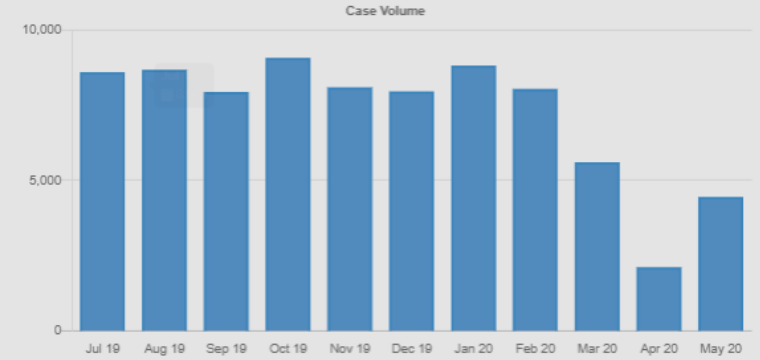
Departmental Focus

All Measures

Departmental Focus

3,389 Cases

482 Providers



<p>BP-01 Low MAP Prevention < 55</p> <p>99% Cases Threshold ≥ 90%</p>	<p>BP-02 Avoiding Monitoring Gaps</p> <p>95% Cases Threshold ≥ 90%</p>	<p>CARD-02 Myocardial Infarction</p> <p>Outcome</p>	<p>GLU-01 High Glucose Treated, Intraop</p> <p>0.3% Cases Threshold ≤ 5%</p>	<p>97% Cases Threshold ≥ 90%</p>
<p>GLU-02 Low Glucose Treated, Intraop</p> <p>90% Cases Threshold ≥ 90%</p>	<p>MED-01 Avoiding Medication Overdose</p> <p>Outcome</p>	<p>0.1% Cases Threshold ≤ 5%</p>	<p>NMB-01 Train of Four Taken</p> <p>96% Cases Threshold ≥ 90%</p>	<p>NMB-02 Reversal Administered</p> <p>99% Cases Threshold ≥ 90%</p>
<p>PONV-01 PONV prophylaxis</p> <p>94% Cases Threshold ≥ 90%</p>	<p>PUL-01 Protective Tidal Volume, 10 mL/kg PBW</p> <p>99% Cases Threshold ≥ 90%</p>	<p>TEMP-01 Thermoregulation Vigilance - Active Warming</p> <p>91% Cases Threshold ≥ 90%</p>	<p>TEMP-02 Thermoregulation Monitoring - Core Temperature</p> <p>97% Cases Threshold ≥ 90%</p>	
<p>TEMP-03 Perioperative Hypothermia</p> <p>VBR Outcome</p> <p>1.0% Cases Threshold ≤ 10%</p>	<p>TOC-02 Postoperative Transfer of Care to PACU</p> <p>VBR</p> <p>96% Cases Threshold ≥ 90%</p>	<p>TRAN-01 Transfusion Management Vigilance</p> <p>81% Cases Threshold ≥ 90%</p>	<p>TRAN-02 Overtransfusion</p> <p>Outcome</p> <p>3.7% Cases Threshold ≤ 10%</p>	

Navigation: Filters

MPOG Reporting | Home | Dashboards | Measure Summary | Provider List | Case List | Kate Buehler

Entity: Institution A

Time Period: Past 12 Months

Surgical Service: Cardiac

Additional Filters: + Gender, + Location, + Patient Age, + Provider Type, + Race/Ethnicity

Institution A: All Measures

Below are all me

482 Providers

Case Volume

Month	Case Volume
Jul 19	~8,500
Aug 19	~8,500
Sep 19	~7,500
Oct 19	~9,000
Nov 19	~8,000
Dec 19	~7,500
Jan 20	~8,500
Feb 20	~7,500
Mar 20	~5,500
Apr 20	~2,500
May 20	~4,500

Recent Months

- June 2020
- May 2020
- April 2020

Recent Years

- 2020
- 2019
- 2018

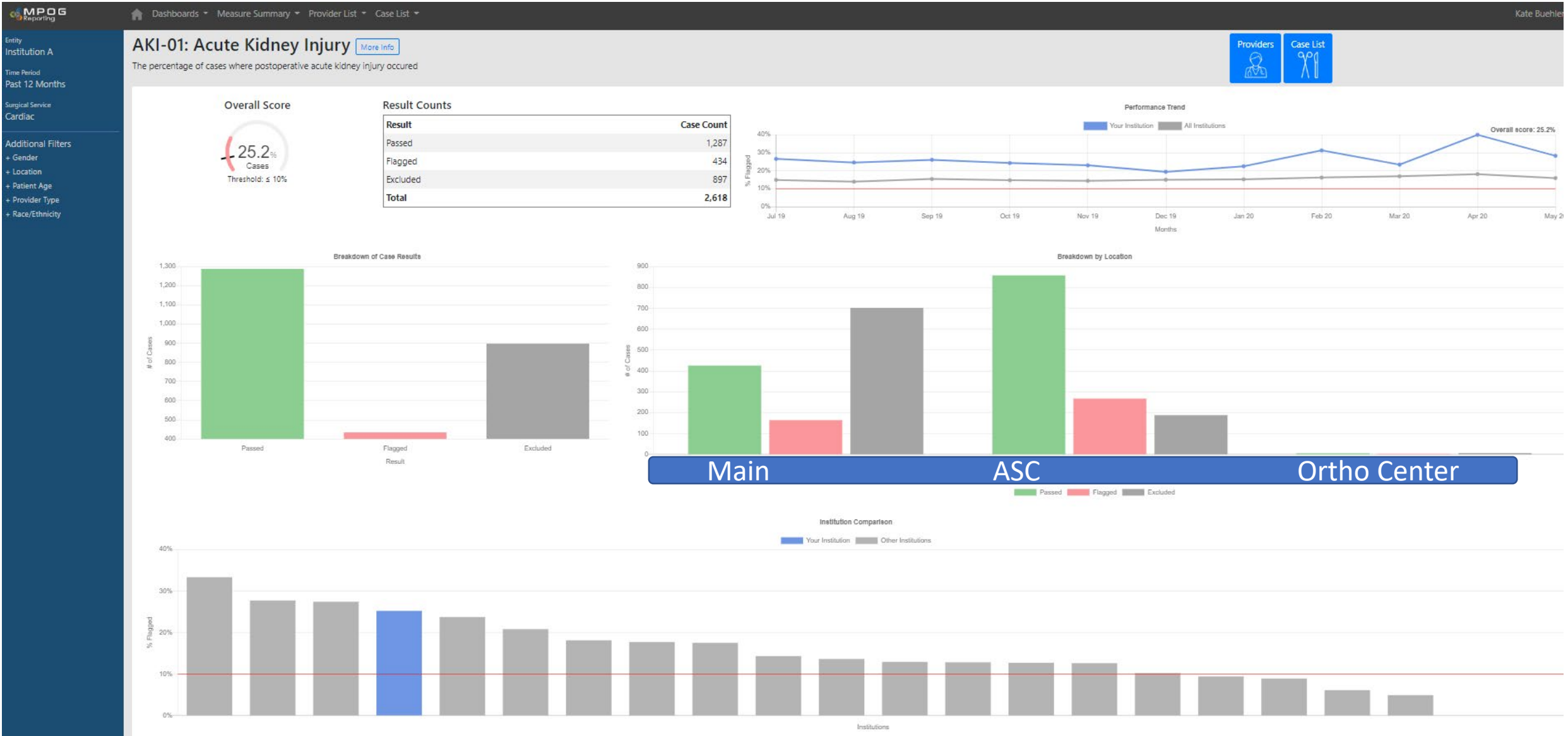
Other

- Past 12 Months
- Current Month
- Custom

From to

Measure ID	Measure Name	Current Cases	Threshold
BP-03	Low Map Prevention < 65	95% Cases	Threshold ≥ 90%
FLUID-01-NC	Minimizing Colloid Use (Non-Cardiac)	83% Cases	No threshold
GLU-04	Low Glucose Treated, Periop	86% Cases	Threshold ≥ 90%
PONV-01	PONV prophylaxis	99% Cases	Threshold ≥ 90%
PUL-01	Protective Tidal Volume, 10 mL/kg PBW	4.8% Cases	Threshold ≤ 5%

Measure Summary



Case List

MPOG Reporting

Dashboards ▾ Measure Summary ▾ Provider List ▾ Case List ▾

Kate Buehler ▾

Entity: Institution A

Time Period: Past 12 Months

Surgical Service: Cardiac

AKI-01: Acute Kidney Injury Cases [More Info](#)

The percentage of cases where postoperative acute kidney injury occurred

[Case Report Download](#)

Summary [Providers](#)

Passed Flagged Excluded

Search:

Show entries

View Case	Measure Result	Date of Service	Operating Room	Surgical Service	Procedure	Primary Anesthesia CPT	Measure Result Reason
View Case	Passed	5/30/2020 7:30	CVC-OR 02	Cardiac	MIDLINE MEDIASTINAL EXPLORATION, STERNAL CLOSURE WITH OR WITHOUT DEBRIDEMENTBD IN OR TOOTH EXTRACTION	00550	AKI Stage: 0
View Case	Passed	5/29/2020 13:55	CVC-OR 04	Cardiac	MIDLINE AORTIC VALVE REPAIR OR REPLACEMENTMIDLINE ASCENDING ANEURYSM REPAIRMIDLINE MAZE PROCEDURMIDLINE CORONARY ARTERY BYPASS GRAFT	00562	AKI Stage: 0
View Case	Passed	5/29/2020 13:50	CVC-OR 02	Cardiac	MIDLINE CORONARY ARTERY BYPASS GRAFT	00567	AKI Stage: 0
View Case	Passed	5/29/2020 8:00	CVC-OR 02	Cardiac	MIDLINE MITRAL VALVE REPAIR OR REPLACEMENTMIDLINE TRICUSPID VALVE REPAIR OR REPLACEMENT	00562	AKI Stage: 0
View Case	Excluded	5/29/2020 7:30	M-CPU-EP	Cardiac	PEDCATH EPS WITH ABLATIOPEDCATH DIAGNOSTIC R AND L HEART CATH		
View Case	Flagged	5/29/2020 7:30	M-OR 17	Cardiac	MIDLINE ARTERIAL SWITCTBD IN OR PERFUSION CARDIATBD IN OR CARDIAC PUMP AGE 0-3MO	00561	AKI Stage: 1
View Case	Passed	5/29/2020 7:30	M-OR 19	Cardiac	MIDLINE VENTRICULAR SEPTAL DEFECT REPAIRMIDLINE CARDIAC PUMP AGE 0-3MMIDLINE PERFUSION CARDIAC	00561	AKI Stage: 0
View Case	Passed	5/29/2020 7:00	CVC-OR 03	Cardiac	MIDLINE CORONARY ARTERY BYPASS GRAFT	00567	AKI Stage: 0
View Case	Flagged	5/29/2020 7:00	CVC-OR 04	Cardiac	MIDLINE MITRAL VALVE REPAIR OR REPLACEMENTMIDLINE TRICUSPID VALVE REPAIR OR REPLACEMENT	00562	AKI Stage: 1
View Case	Passed	5/29/2020 7:00	CVC-OR 01	Cardiac	MIDLINE ASCENDING ANEURYSM REPAIR WITH HYPOTHERMIC CIRCULATORY ARRESMIDLINE AORTIC VALVE REPAIR OR REPLACEMENTMIDLINE AORTIC ARCH RECONSTRUCTIONMIDLINE CORONARY ARTERY BYPASS GRAFT		AKI Stage: 0

Showing 1 to 10 of 2,619 entries

Previous 2 3 4 5 ... 262 Next

AKI Toolkit

Acute Kidney Injury Toolkit Released!

ASPIRE measure toolkits are designed to improve care and patient outcomes through the adoption of best practices. ASPIRE toolkits contain a collection of educational resources, articles, and reference guides. Materials within are intended for widespread use across the collaborative to facilitate the sharing of best practices.



Avoiding Respiratory Complications

This toolkit encompasses ASPIRE Measures PUL 01, NMB 01 & NMB 02

Click Here



Perioperative Transfusion Stewardship

This toolkit encompasses ASPIRE Measures TRAN 01 & TRAN 02

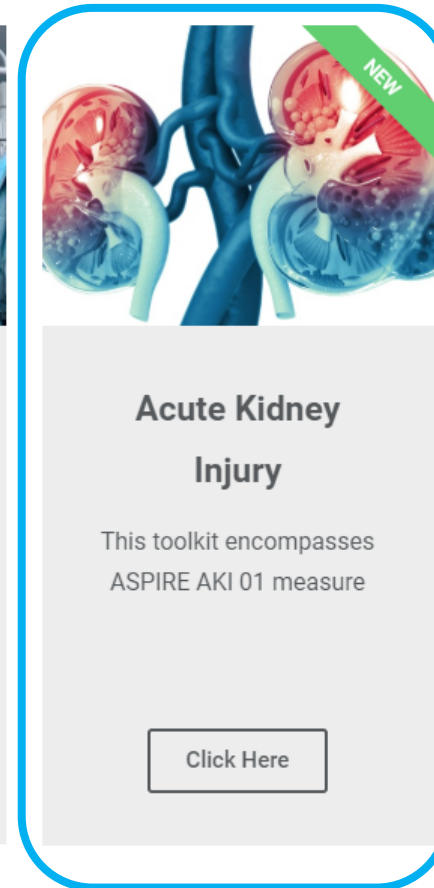
Click Here



Surgical Site Infection

This toolkit encompasses ASPIRE Measures TEMP 01, TEMP 02, TEMP 03 & GLU 01

Click Here



Acute Kidney Injury

This toolkit encompasses ASPIRE AKI 01 measure

Click Here

Includes six tools:

- Overview/Pathophysiology
- Recommendations for Adult Surgical Patients
- Avoiding Kidney Injury: Pediatrics
- Avoiding Kidney Injury: Obstetrics
- Avoiding Kidney Injury: Cardiac Surgery
- Reference Guide (one-pager)

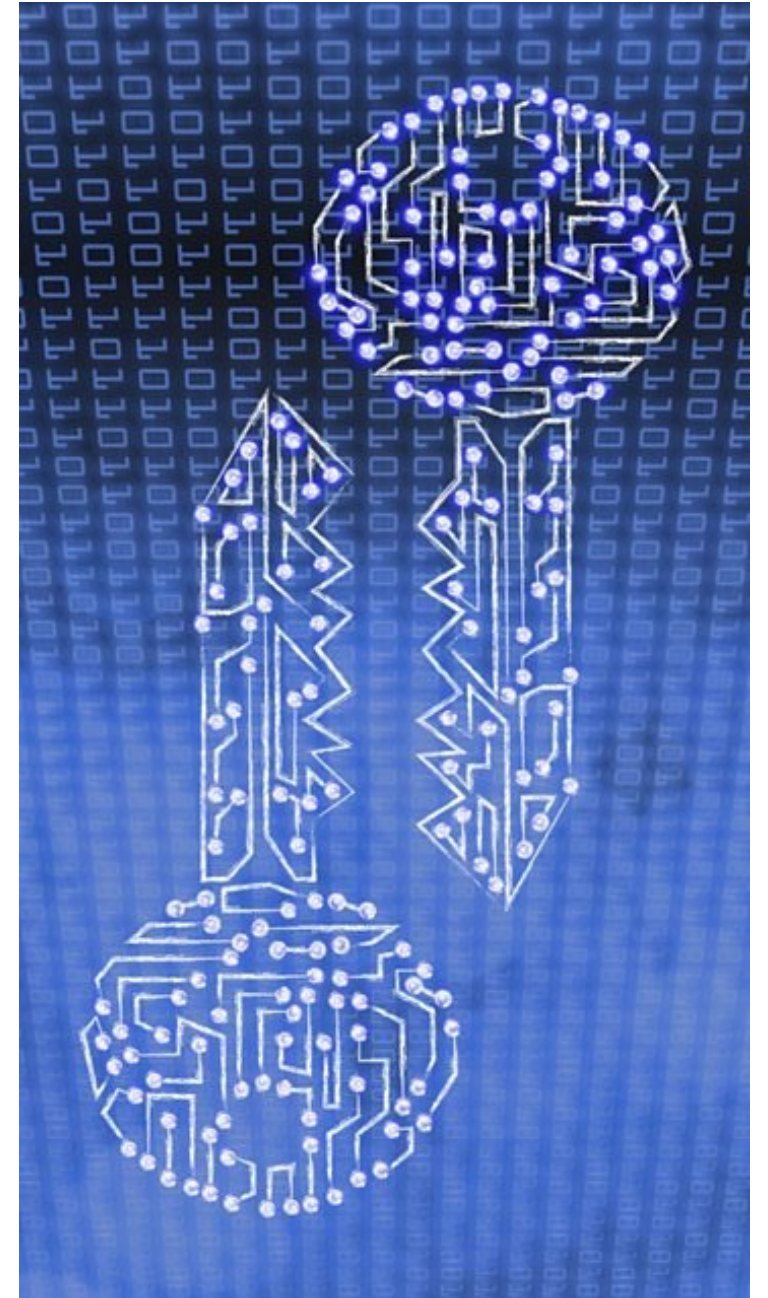
<https://mpog.org/akitoolkit/>

All components of the Toolkits are available for printing and distribution. Please utilize these materials as you deem best, and feel free to provide feedback so we can modify and improve them.

Mortality Data

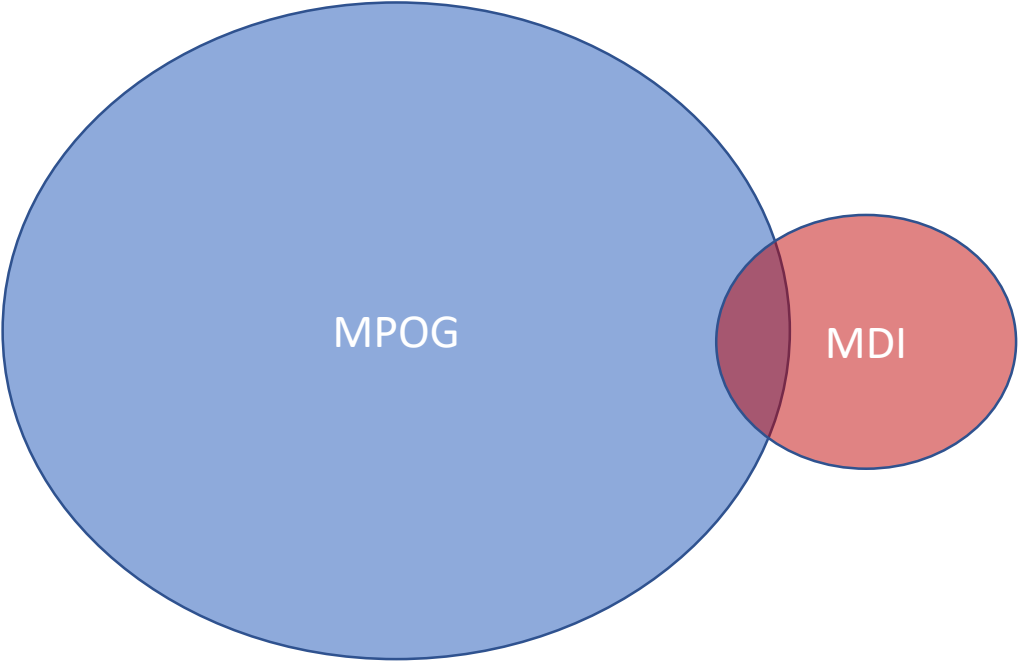
Last year...

- We explained the BRI (Blinded Record Index), a tool for matching patients across different entities, and you implemented it.
- At each site, we create a hashed code using PHI stored locally. Ensure that it is computationally infeasible to reverse code.
- Planned to link data with Michigan Death Index and also to help determine readmission rates.



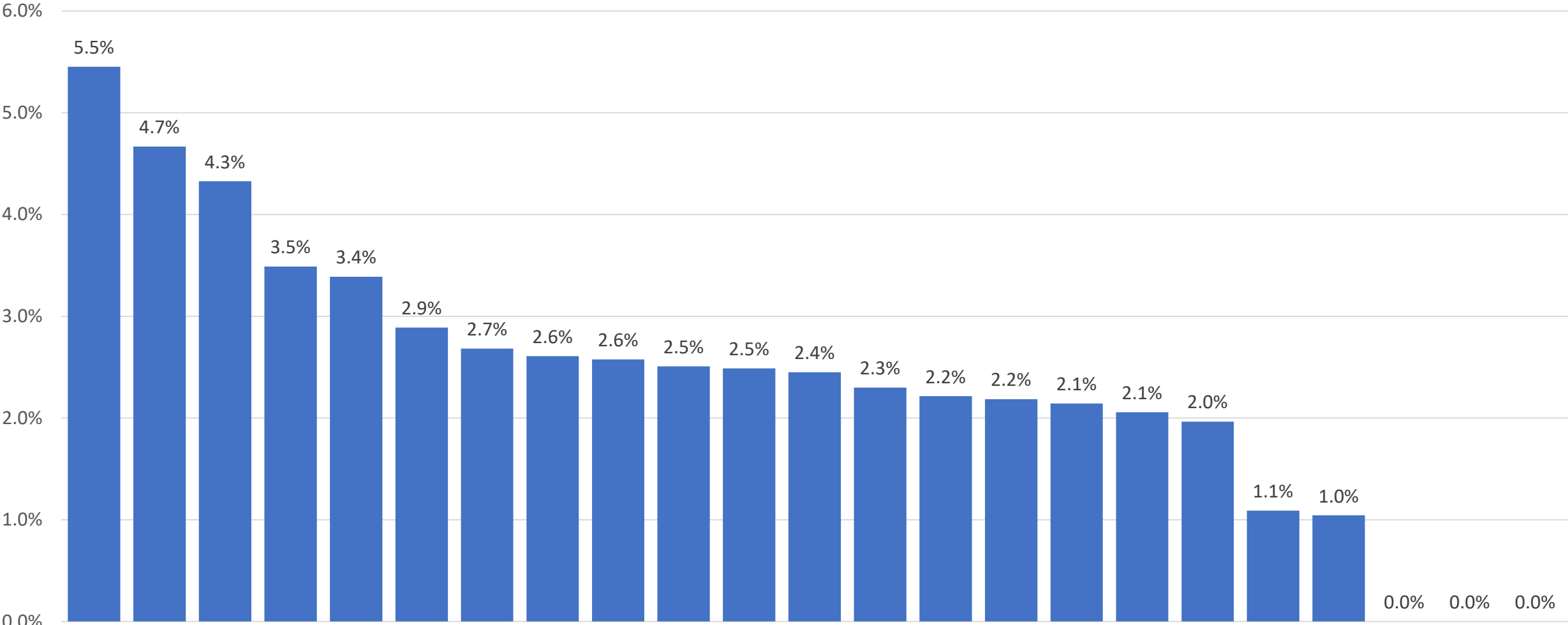
Early match results with MDI day mortality results

Total Michigan MPOG Patients in 2019	465,285
Total MDI records in 2019	97,438
Exact and Highly Probably Matches between MPOG and MDI	16,502



Preliminary 2019 all cause mortality using MDI data

MDI High-Scoring Possible Match Rate



Michigan Institutions

Sample cases

- OPEN REDUCTION INTERNAL FIXATION OF MULTIPLE RIGHT RIB FRACTURES , AND RIGHT CHEST TUBE PLACEMENT
- RIGHT PHACOEMULSIFICATION WITH INTRAOCULAR LENS
- TRANSPLANT LIVER
- EGD W/ ANES
- EXPLORATORY LAPAROTOMY, ABDOMINAL WASHOUT, POSSIBLE BOWEL RESECTION, POSSIBLE WOUND VACUUM, POSSIBLE OSTOMY
- MIDLINE POSTERIOR LUMBAR SPINAL FUSION WITH STEALTH



Research Projects of Interest

Does Anesthesia Quality Improvement Participation Lead to Incremental Savings in a Surgical Quality Collaborative Population?



- Aim: Leverage the payment data captured by the Michigan Value Collaborative (MVC) to examine the difference between costs before and after ASPIRE quality improvement participation, and the difference between costs between institutions that do and do not participate in ASPIRE.
- Hypothesis: Participation in ASPIRE is associated with reduced cost for high volume procedures included in the MVC registry.
- **Primary Investigator: Allison Janda, MD**

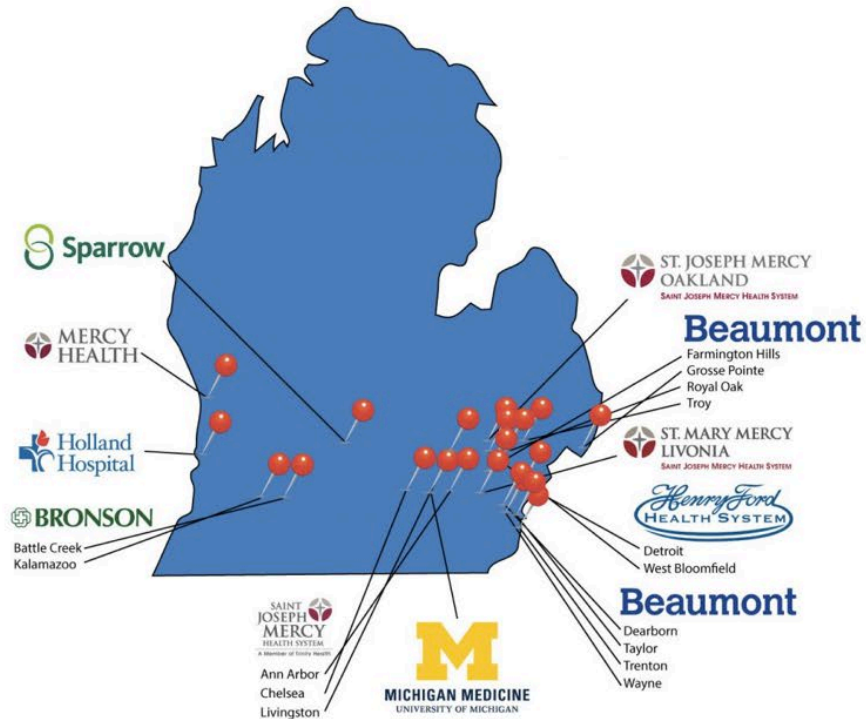
Results

- For all payers across all procedure types, we found significantly greater reduction in post-discharge and total episode payments for procedures performed in ASPIRE hospitals compared to non-ASPIRE control hospitals
- Trends in specific components of total episode payments -- index, readmission, and professional fee payments -- were not significantly different between the 2 groups, but all trended lower in the ASPIRE hospitals.

Payment Type	Difference-in-differences estimate (\$)	p-value	Standard error
Index Episode	-346.05	0.1103	216.69
Post Discharge	-354.30	0.0023	116.44
Readmission	45.57	0.5803	82.41
Professional Fee	-54.22	0.1918	41.54
Total Episode	-718.62	0.0234	316.94

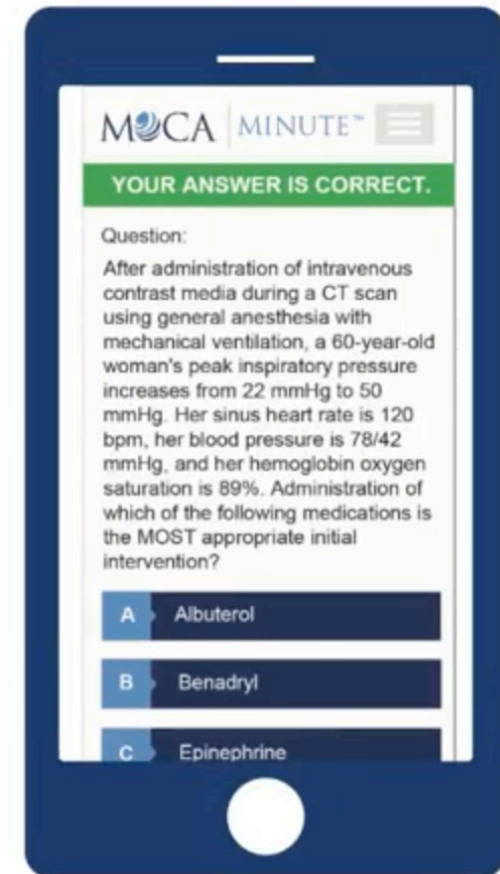
FAER-ABA Research in Education Grant

Seeks to evaluate the value of primary certification and the Maintenance of Certification in Anesthesiology™ program (MOCA®) to clinicians and the public, including assessment of how certification is related to clinical performance and novel means to analyze and utilize data.



ASPIRE now is involved in the first two projects sponsored by the FAER-ABA Research in Education Grant:

- The first, led by Ben Cloyd MD at the University of Michigan, is evaluating the association between MOCA participation and selected ASPIRE metrics.
 - Preparing to be presented at PCRC
- The second, led by Julie Huffmyer MD at the University of Virginia, will evaluate whether an association exists between MOCA Minute performance and selected ASPIRE metrics, and will begin in 2021.





Thank you

Keynote Speaker – Gary Loyd, MD, MMM

- Director, Perioperative Surgical Home
- Director, Quality Programs in Anesthesia
- MPOG PI and IT Champion – HF Allegiance





Thank you

Keynote Speaker – Matt Wixson, MD

- Associate Chair, Diversity
- Assistant Director, Medical Student Education





Thank you